

FR FLOOR SYSTEM
FIRE-RESISTANT GLASS
POLFLAM F



POLFLAM® fire-resistant glass is tested in certified research institutes across Europe.



POLFLAM F fire-resistant glass installed in FR Floor System

POLFLAM is an independent manufacturer of fire-resistant glass, from research to technology and to production. POLFLAM fire protection glass is manufactured on the basis of modern hydrogel technology which makes it possible to obtain a glass of exceptional functionality.

On the European market, POLFLAM brand is today an unquestionable synonym of high product quality.

POLFLAM F fire-resistant glass is used for floor applications.

It is available for internal applications in the fire resistance classes REI 30, 60, 90 and 120.

Fire-resistant glazed floors provide for more daylight saturation while giving the users of the building maximum protection in the event of fire.

POLFLAM offers glass for glazed floors with a load-bearing capacity up to $q_k = 5 \text{ kN/m}^2$.

POLFLAM F glass can be covered with anti-slip screen print and is also available as irregular glass panes.

For each application, the appropriate structural design of all statically exposed elements as well as their connections must be verified by a static calculation.

This brochure gives a brief overview of the possibilities for POLFLAM F fire-resistant glass. For the correct installation details and instructions the classification or test report from the tested construction needs to be observed. Please contact your local POLFLAM specialist for more information.



	POLFLAM F62	POLFLAM F72	POLFLAM F110
Resistance to fire	REI 30, REI 60	REI 30	REI 30, REI 60, REI 90, REI 120
Total thickness [mm]	62 ±3	72 ±3	110 ±3
Weight [kg/m ²]	136	136	158
Operating temperature [°C]	-40 / +50		
Pendulum body impact resistance	1(B)1		1(B)1 / 1(B)1
Light transmittance τ_v [%]	75*	69*	55*
Thermal insulation U_g [W/m ² K]	4.0*	2.8*	0.8**
Sound reduction R_w (C; C_{tr}) [dB]	53 (-3; -7)*	53 (-3; -7)*	54 (-3; -7)*
Maximum glass dimensions [mm]	2200x1650 REI 30 1900x1650 REI 60	2200x1650	2200x1650

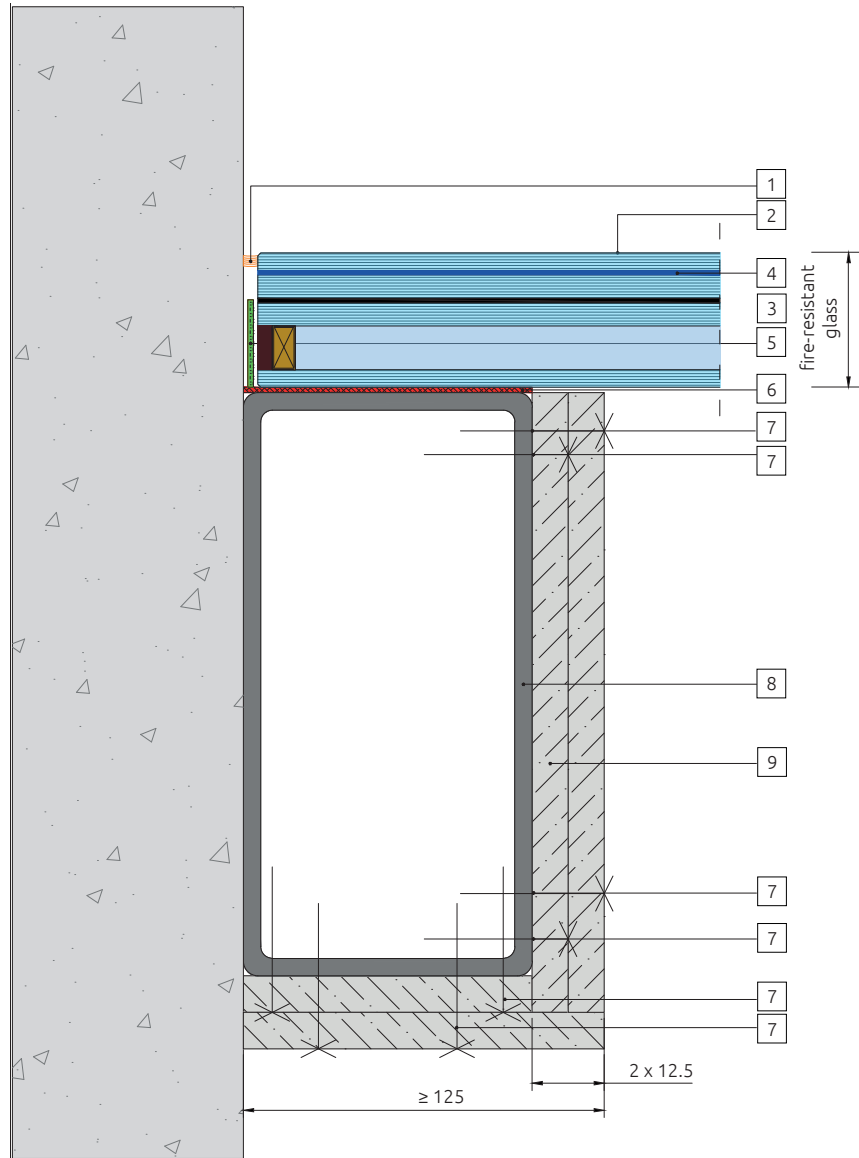
* estimated parameters

** estimated parameters; 2 x Low-E 1.1

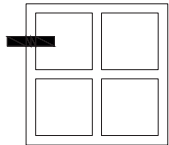
Other glass compositions on request

POLFLAM F62

Installation of POLFLAM F on steel supporting structure



POLFLAM F62
REI 30, REI 60

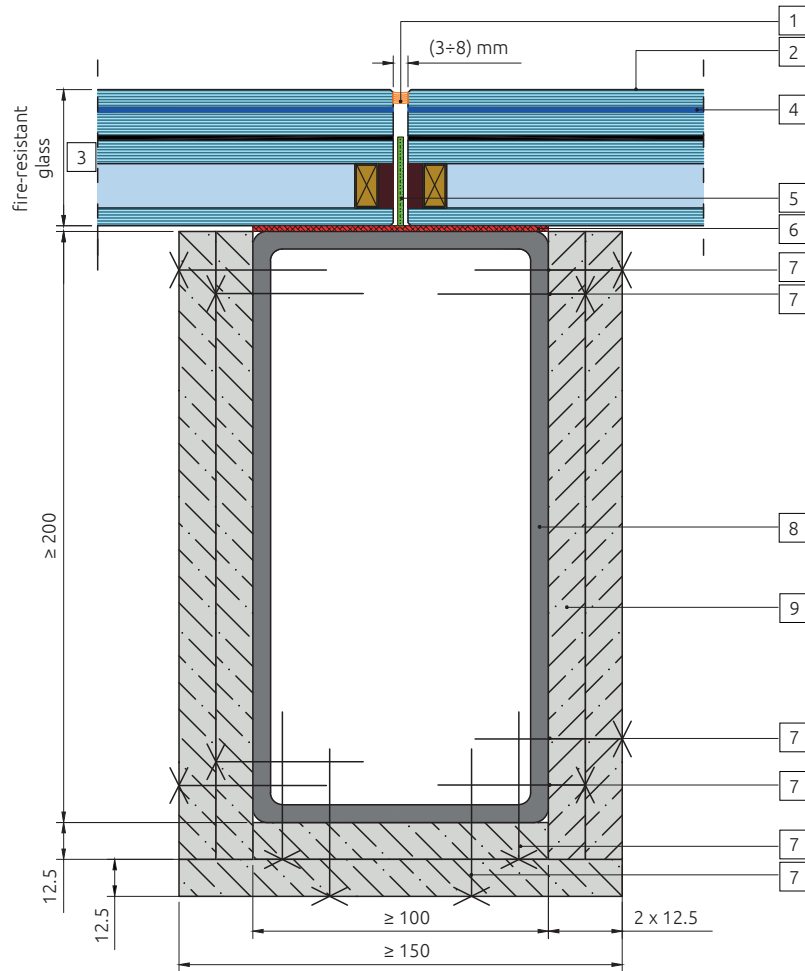


POLFLAM FR Floor System

1	Silicone - DOWSIL™ 791
2	Possible anti-slip print
3	Fire-resistant glass POLFLAM F62
4	Possible edge-printing (blacking out)
5	Intumescent tape KERAFIX® FXL 200 35 x 2 mm
6	Ceramic fibre paper
7	Self-drilling screw made of galvanized carbon steel (6.3 x 50 mm)
8	Substructure: steel beam or reinforced concrete beam (see detail on page 7)
9	Plasterboard type DF 2 x 12.5 mm

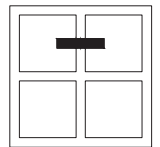
POLFLAM F62

Installation of POLFLAM F on steel supporting structure



POLFLAM F62

REI 30, REI 60

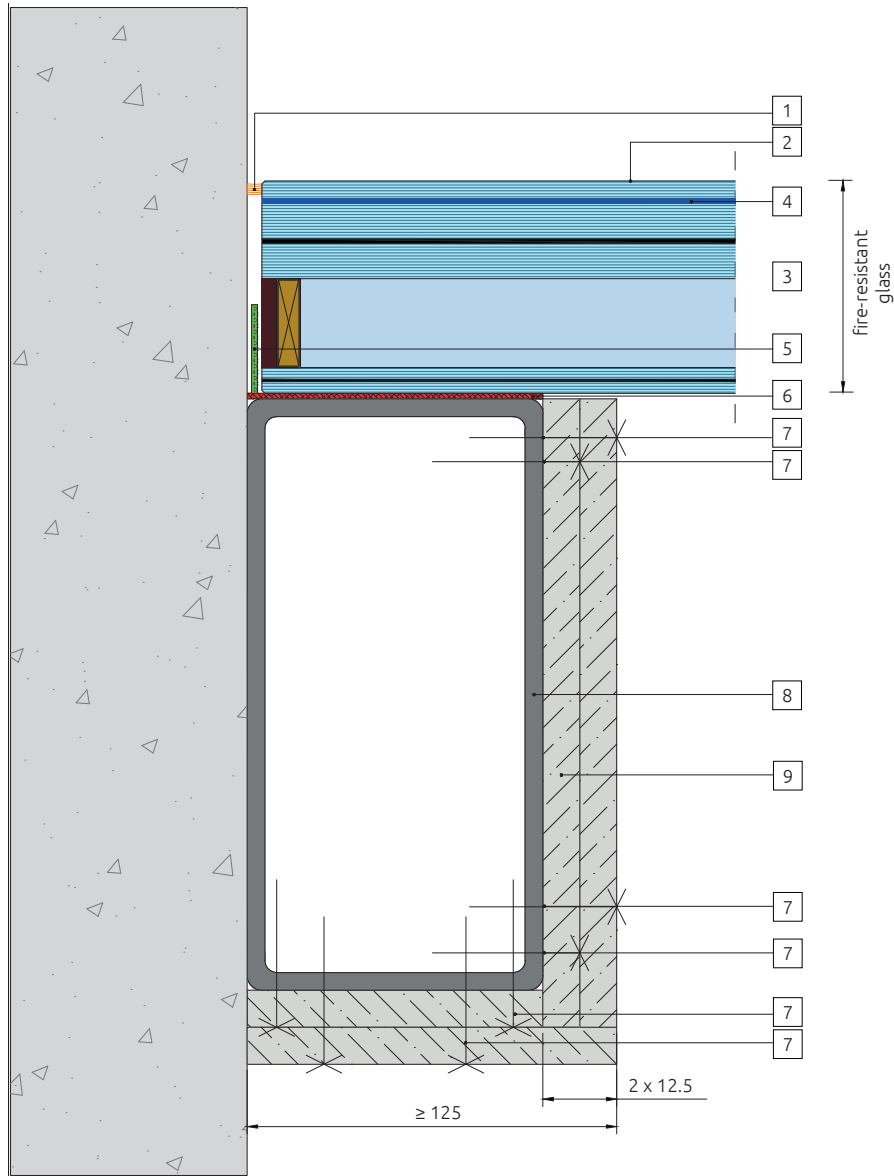


POLFLAM FR Floor System

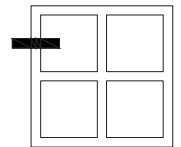
1	Silicone - DOWSIL™ 791
2	Possible anti-slip print
3	Fire-resistant glass POLFLAM F62
4	Possible edge-printing (blacking out)
5	Intumescent tape KERAFIX® FXL 200 35 x 2 mm
6	Ceramic fibre paper
7	Self-drilling screw made of galvanized carbon steel (6.3 × 50 mm)
8	Substructure: steel beam or reinforced concrete beam (see detail on page 8)
9	Plasterboard type DF 2 x 12.5 mm

POLFLAM F72

Installation of POLFLAM F on steel supporting structure



POLFLAM F72
REI 30

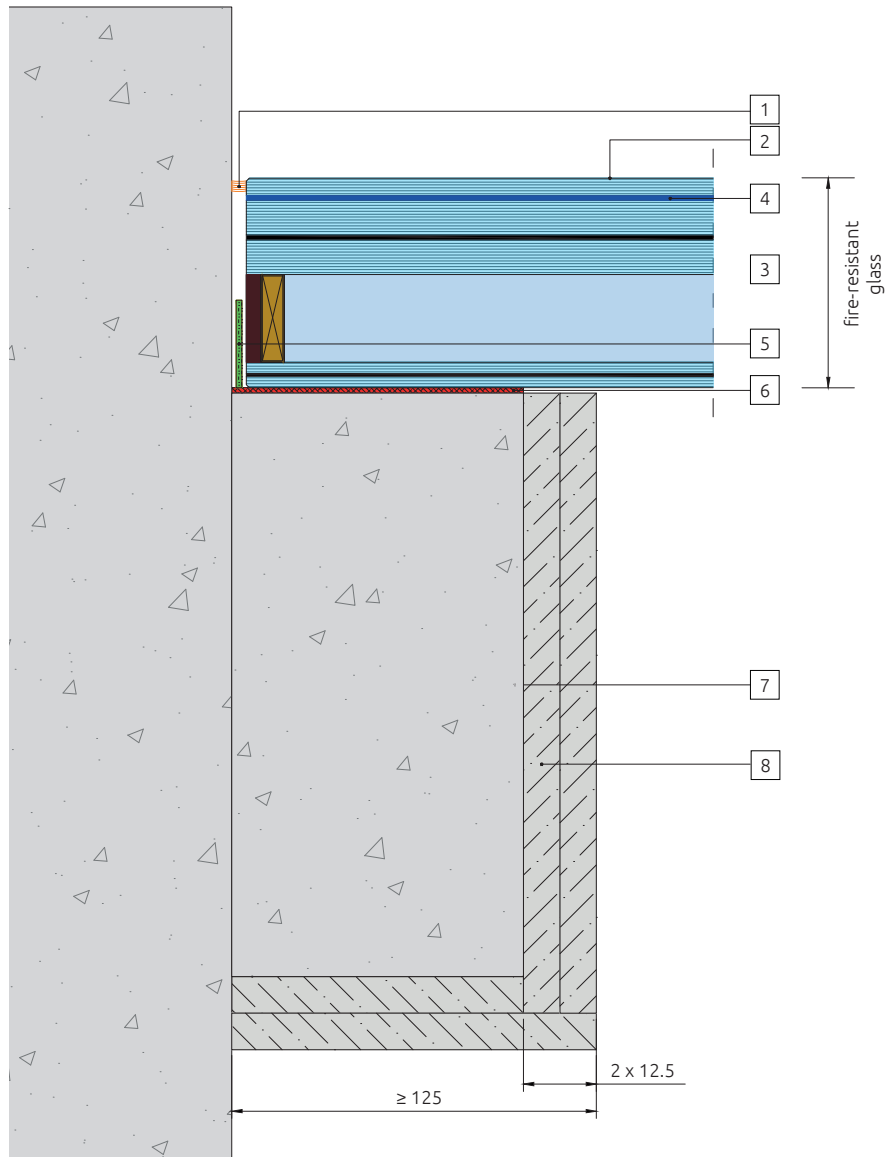


POLFLAM FR Floor System

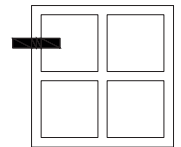
1	Silicone - DOWSIL™ 791
2	Possible anti-slip print
3	Fire-resistant glass POLFLAM F72
4	Possible edge-printing (blacking out)
5	Intumescent tape KERAFIX® FXL 200 35 x 2 mm
6	Ceramic fibre paper
7	Self-drilling screw made of galvanized carbon steel (6.3 x 50 mm)
8	Substructure: steel beam or reinforced concrete beam (see detail on page 7)
9	Plasterboard type DF 2 x 12.5 mm

POLFLAM F72

Installation of POLFLAM F on reinforced concrete supporting structure



POLFLAM F72
REI 30

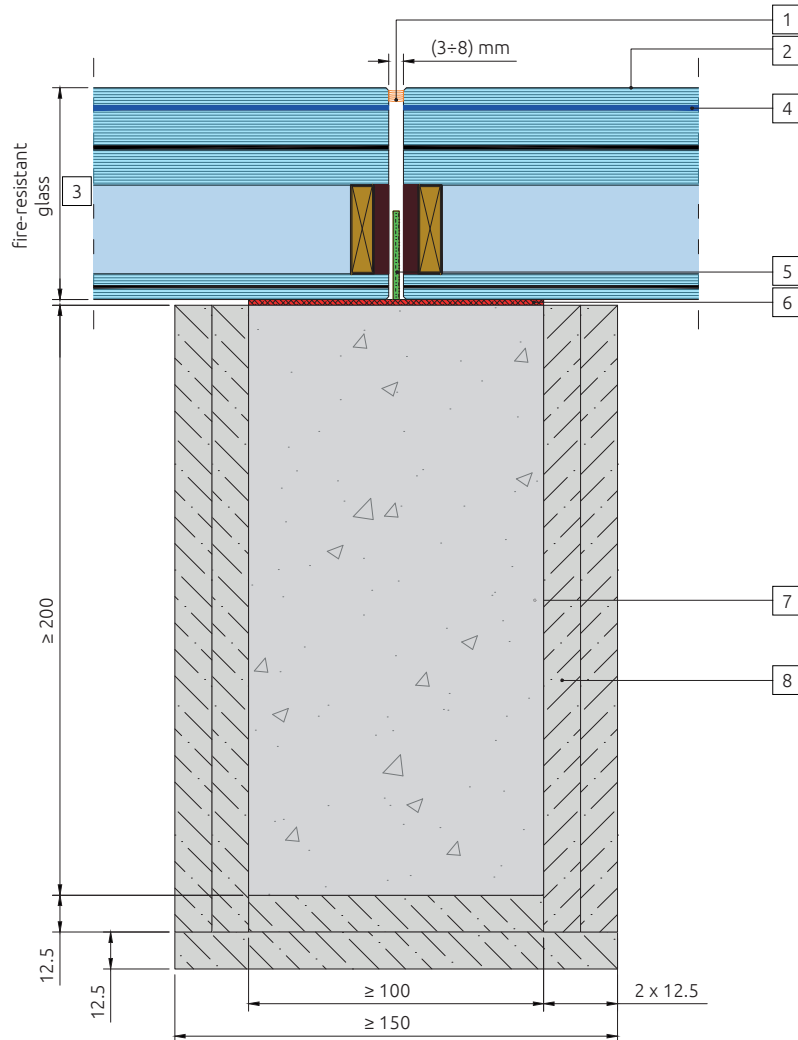


POLFLAM FR Floor System

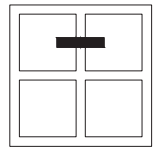
1	Silicone - DOWSIL™ 791
2	Possible anti-slip print
3	Fire-resistant glass POLFLAM F72
4	Possible edge-printing (blacking out)
5	Intumescent tape KERAFIX® FXL 200 35 x 2 mm
6	Ceramic fibre paper
7	Reinforced concrete beam
8	Plasterboard type DF 2 x 12.5 mm (optional)

POLFLAM F72

Installation of POLFLAM F on reinforced concrete supporting structure



POLFLAM F72
REI 30

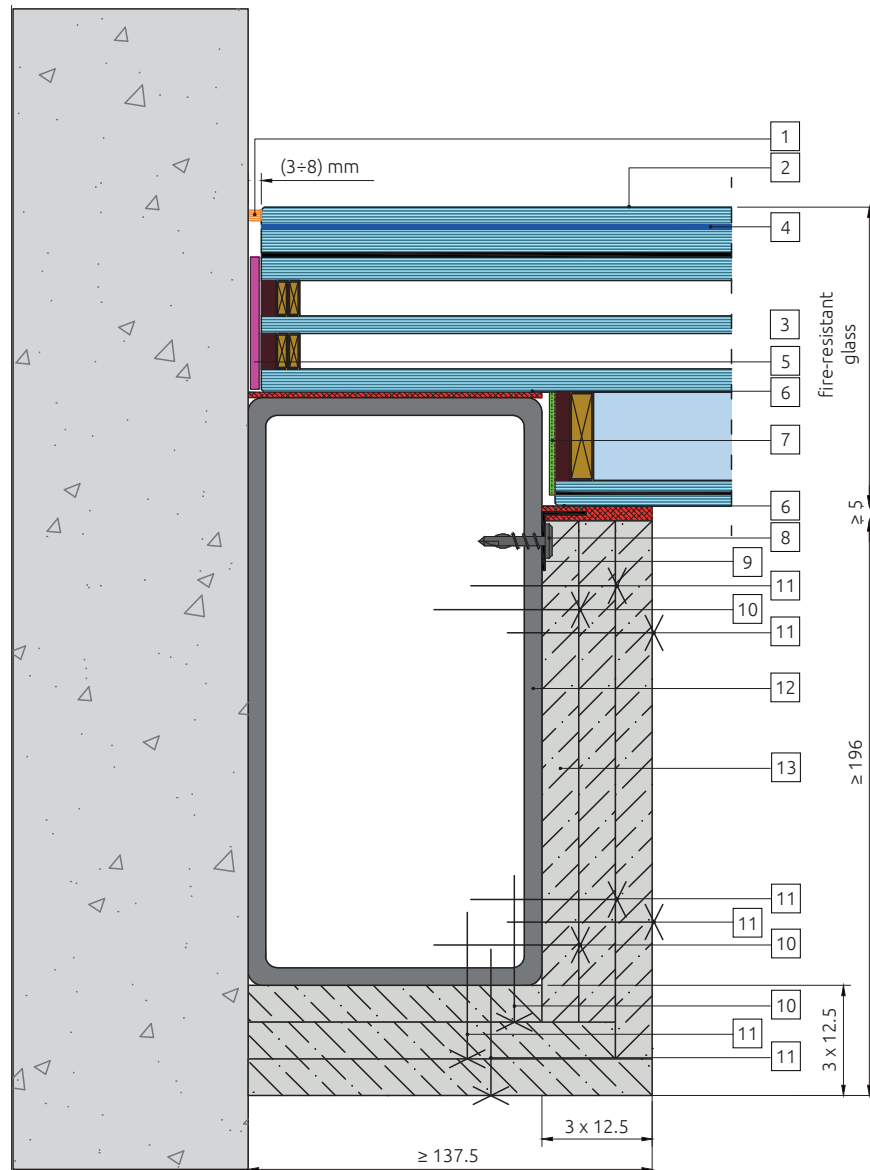


POLFLAM FR Floor System

1	Silicone - DOWSIL™ 791
2	Possible anti-slip print
3	Fire-resistant glass POLFLAM F72
4	Possible edge-printing (blacking out)
5	Intumescent tape KERAFIX® FXL 200 35 x 2 mm
6	Ceramic fibre paper
7	Reinforced concrete beam or steel beam covered with gypsum (see detail on page 5)
8	Plasterboard type DF 2 x 12.5 mm (optional)

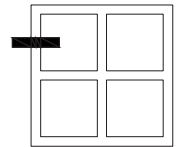
POLFLAM F110

Installation of POLFLAM F on steel supporting structure



POLFLAM F110

REI 30, REI 60, REI 90, REI 120

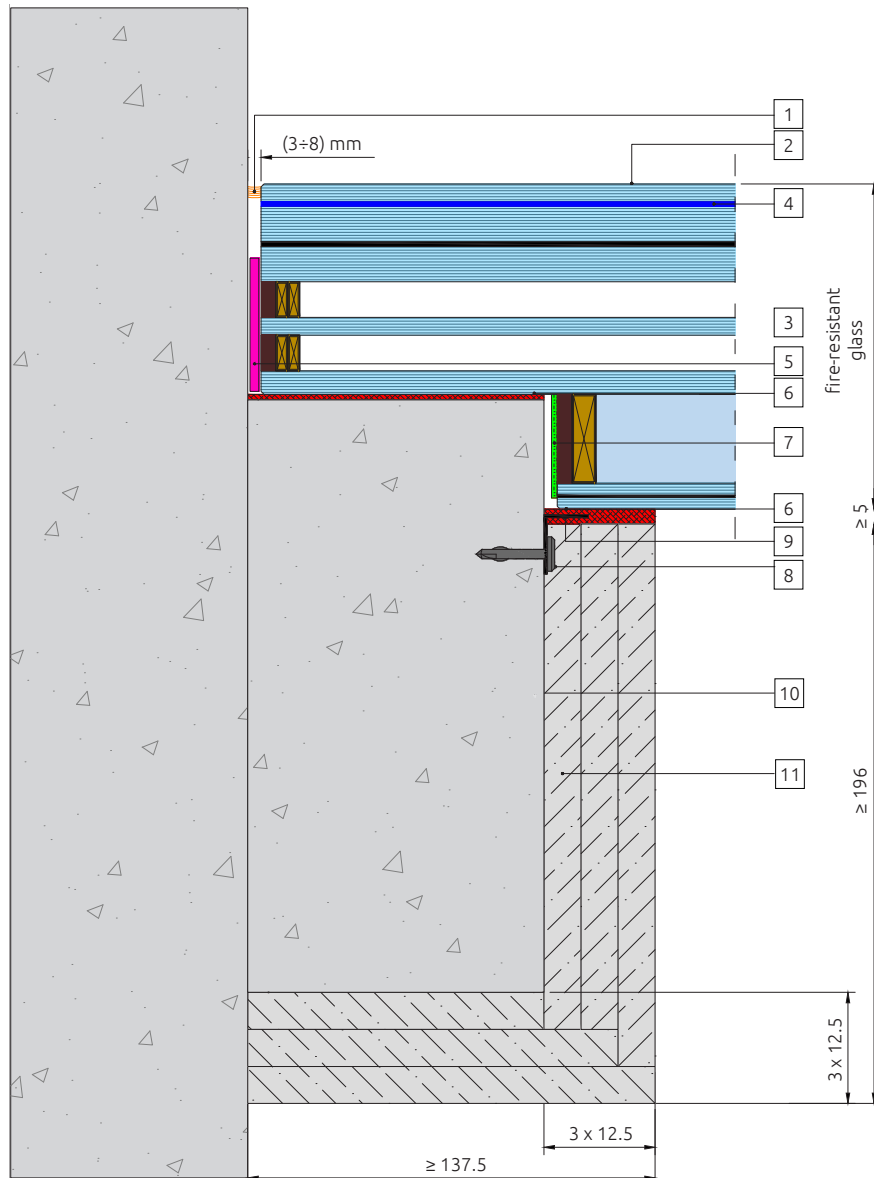


POLFLAM FR Floor System

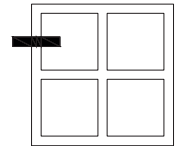
1	Silicone - DOWSIL™ 791
2	Possible anti-slip print
3	Fire-resistant glass POLFLAM F110
4	Possible edge-printing (blacking out)
5	Possible filing with polipropylene (45 x 3 mm)
6	Ceramic fibre paper
7	Intumescent tape KERAFIX® FXL 200 35 x 2 mm
8	Self-drilling screw made of galvanized carbon steel (4.2 x 25 mm)
9	Stainless steel L bracket 40/20/0.8 every 400 mm
10	Self-drilling screw made of galvanized carbon steel (6.3 x 50 mm)
11	Self-drilling screw made of galvanized carbon steel (6.3 x 70 mm)
12	Substructure: steel beam or reinforced concrete beam (see detail on page 10)
13	Plasterboard type DF 3 x 12.5 mm

POLFLAM F110

Installation of POLFLAM F on reinforced concrete supporting structure



POLFLAM F110
REI 30, REI 60, REI 90, REI 120

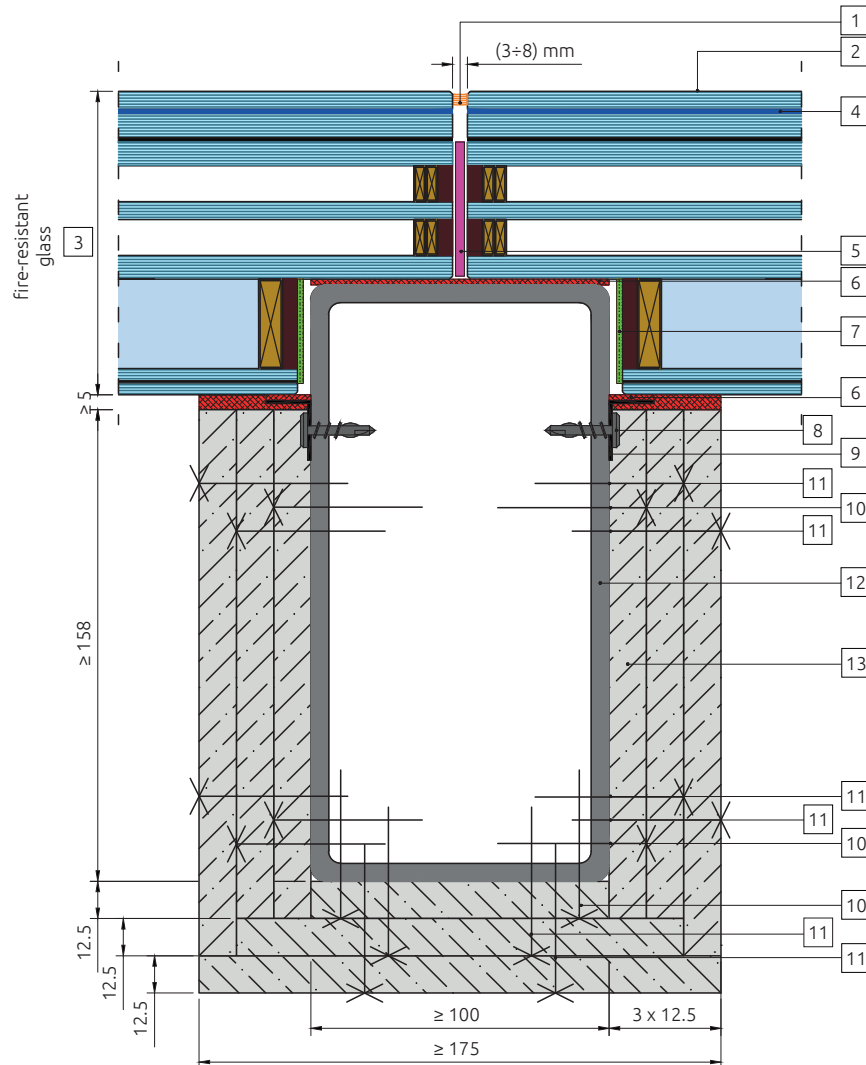


POLFLAM FR Floor System

1	Silicone - DOWSIL™ 791
2	Possible anti-slip print
3	Fire-resistant glass POLFLAM F110
4	Possible edge-printing (blacking out)
5	Possible filling with polypropylene (45 x 3 mm)
6	Ceramic fibre paper
7	Intumescent tape KERAFIX® FXL 200 35 x 2 mm
8	Screw (4.2 x 25 mm)
9	Stainless steel L bracket 40/20/0.8 every 400 mm
10	Reinforced concrete beam
11	Plasterboard type DF 3 x 12.5 mm

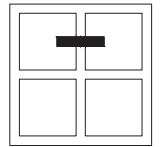
POLFLAM F110

Installation of POLFLAM F on steel supporting structure



POLFLAM F110

REI 30, REI 60, REI 90, REI 120

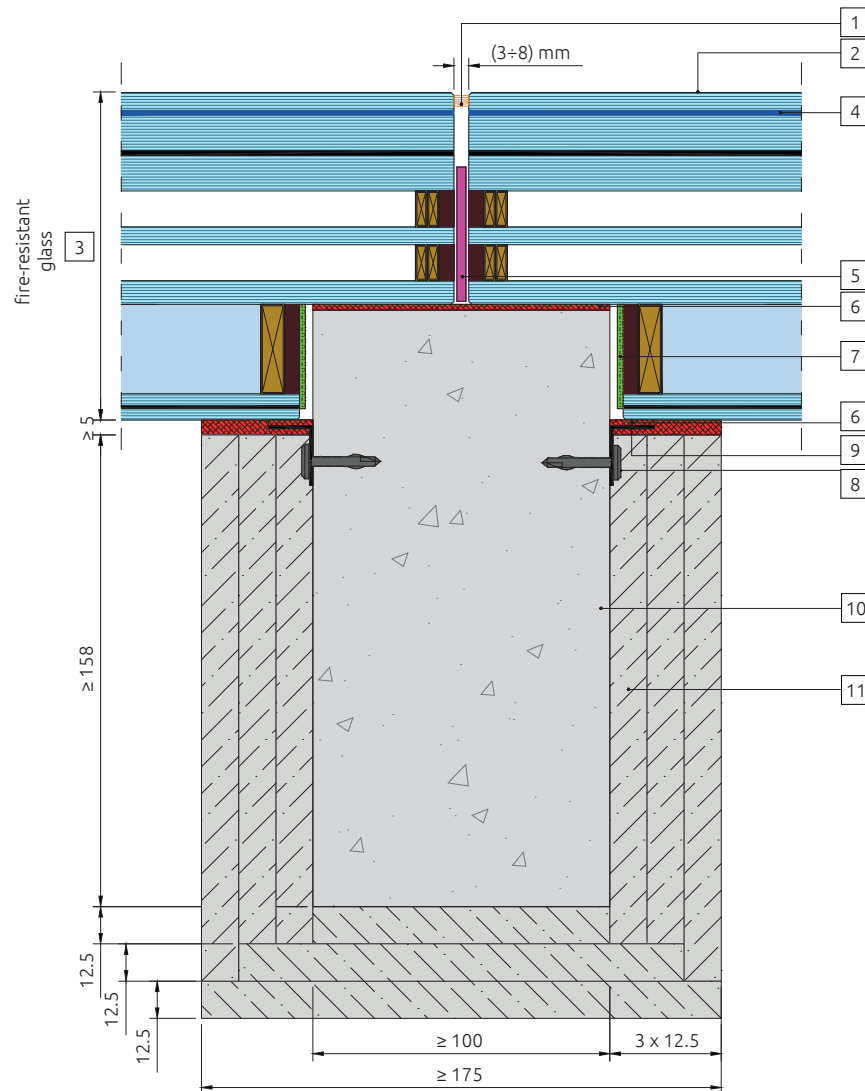


POLFLAM FR Floor System

1	Silicone - DOWSIL™ 791
2	Possible anti-slip print
3	Fire-resistant glass POLFLAM F110
4	Possible edge-printing (blacking out)
5	Possible filling with polypropylene (45 x 3 mm)
6	Ceramic fibre paper
7	Intumescent tape KERAFIX® FXL 200 35 x 2 mm
8	Self-drilling screw made of galvanized carbon steel (4.2 x 25 mm)
9	Stainless steel L bracket 40/20/0.8 mm every 400 mm
10	Self-drilling screw made of galvanized carbon steel (6.3 x 50 mm)
11	Self-drilling screw made of galvanized carbon steel (6.3 x 70 mm)
12	Substructure: steel beam or reinforced concrete beam
13	Plasterboard type DF 3 x 12.5 mm

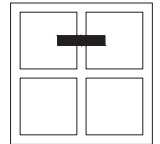
POLFLAM F110

Installation of POLFLAM F on reinforced concrete supporting structure



POLFLAM F110

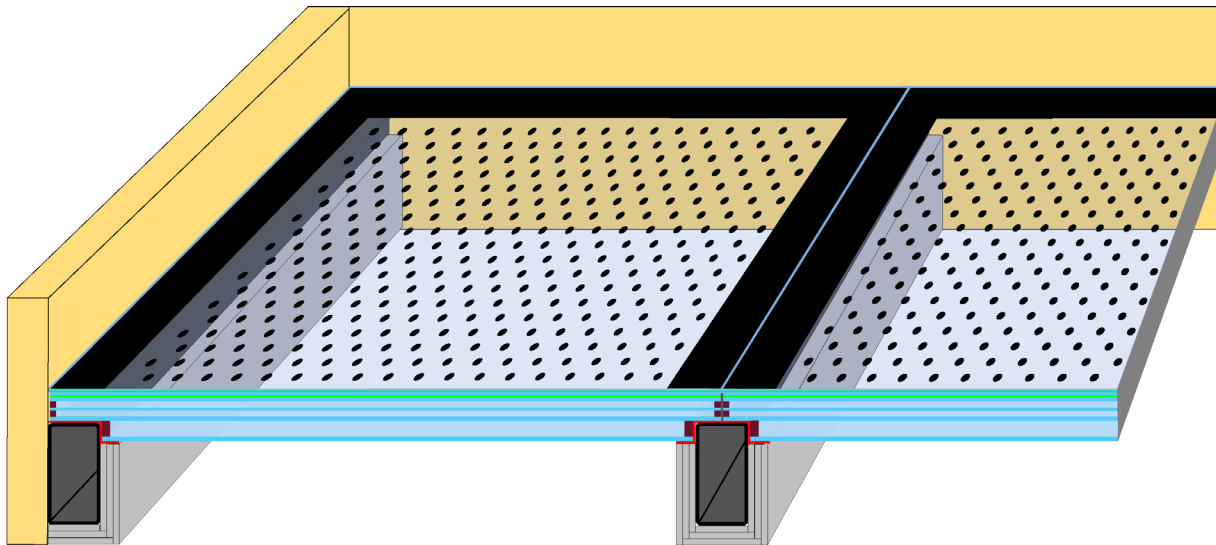
REI 30, REI 60, REI 90, REI 120



POLFLAM FR Floor System

1	Silicone - DOWSIL™ 791
2	Possible anti-slip print
3	Fire-resistant glass POLFLAM F110
4	Possible edge-printing (blacking out)
5	Possible filling with polypropylene (45 x 3 mm)
6	Ceramic fibre paper
7	Intumescent tape KERAFIX® FXL 200 35 x 2 mm
8	Screw (4.2 x 25 mm)
9	Stainless steel L bracket 40/20/0.8 mm every 400 mm
10	Reinforced concrete beam
11	Plasterboard type DF 3 x 12.5 mm

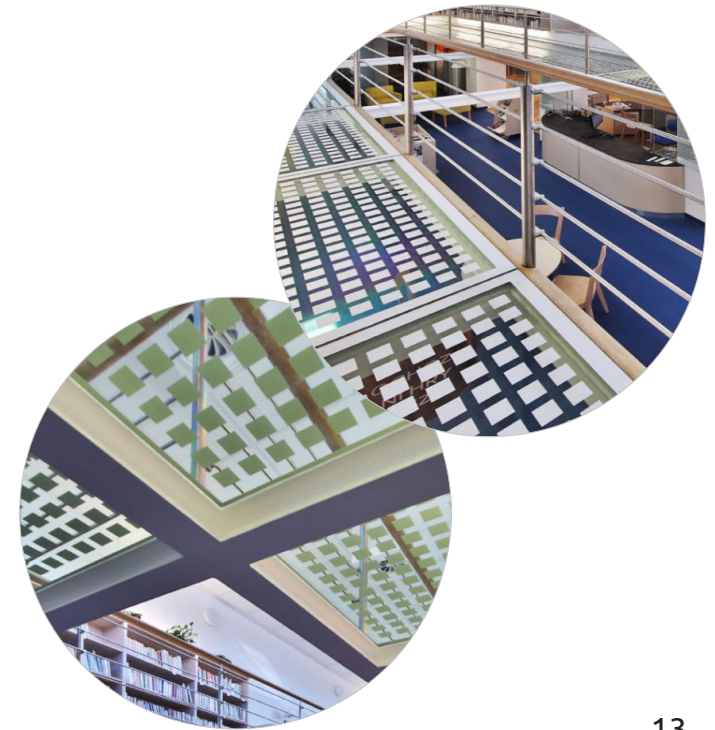
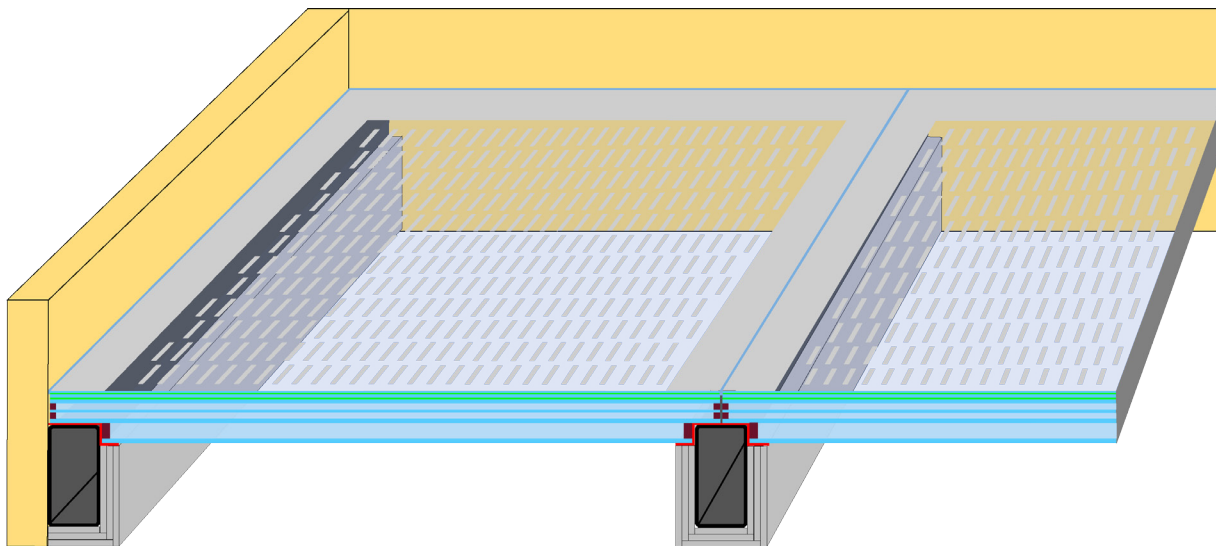
Screen printings for POLFLAM F



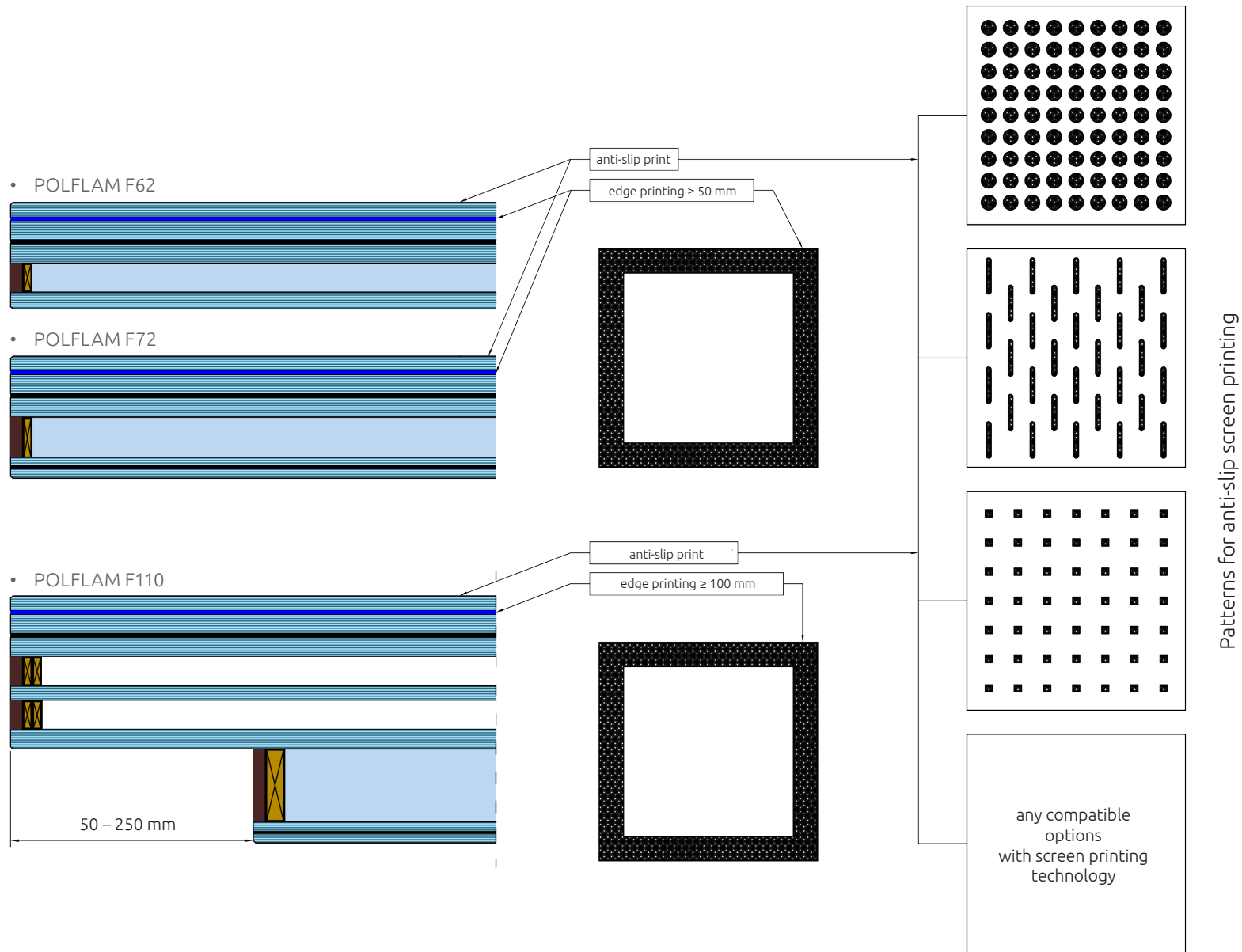
POLFLAM F glass is produced with an opaque edge screen print. During production opaque strips, 50 mm or wider, are embedded in POLFLAM F glass to conceal structural components of the floor system.

Optional screen printed geometric pattern provides anti-slip properties to the glass surface and also improves appearance.

Both the edge screen printing and the surface patterns can be made in different RAL colours on request.

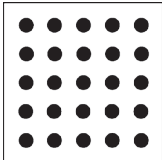
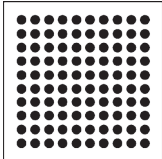
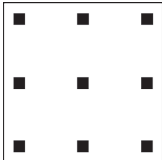
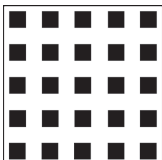
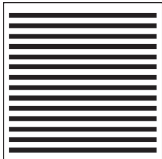


Screen printings for POLFLAM F



Anti-slip screen printing is not guaranteed, price and availability on request

Patterns for anti-slip screen printing

Name	Pattern	Technical Specifications
DOTS 3/3		<ul style="list-style-type: none"> • Dot diameter: 3 mm • Dot spacing: 3 mm • Surface coverage: 24.2% • ITB certified in accordance with DIN 51130: Anti-slip rating "R9" • Standard colours: satin, white • Non-standard colours: RAL – to be discussed individually with our sales department
DOTS 2/1		<ul style="list-style-type: none"> • Dot diameter: 2 mm • Dot spacing: 1 mm • Surface coverage: 37.3% • Standard colours: satin, white • Non-standard colours: RAL – to be discussed individually with our sales department
SQUARES 2.5/12		<ul style="list-style-type: none"> • Side length: 2.5 mm • Square spacing: 12 mm • Surface coverage: 5.7% • Standard colours: satin, white • Non-standard colours: RAL – to be discussed individually with our sales department
SQUARES 4/4		<ul style="list-style-type: none"> • Side length: 4 mm • Square spacing: 4 mm • Surface coverage: 30.9% • Standard colours: satin, white • Non-standard colours: RAL – to be discussed individually with our sales department
STRIPES 1200/1.5		<ul style="list-style-type: none"> • Stripe dimensions: 1200 × 1 mm • Stripe spacing: 1.5 mm • Surface coverage: 44.4% • Standard colours: satin, white • Non-standard colours: RAL – to be discussed individually with our sales department



PARTITIONS



WINDOWS
AND DOORS



FACADES
AND ROOFS



FLOORS



SMOKE
BARRIERS



CE marking confirms that a product complies with its relevant harmonised European Norm.

Technical specification of the products are available at www.polflam.com



POLFLAM Sp. z o.o.
Jeziorzany, Aleja Krakowska 3
05-555 Tarczyn
Poland

T +48 22 726 92 17
export@polflam.com
www.polflam.com

POLFLAM[®]
FIRE RESISTANT GLASS