



# 2021 REFERENCE PROJECTS

# FOREWORD

## **Dear Friends of Glass,**

As Şişecam, thanks to the transparency of glass, we see the invisible - the future of the world - for 85 years and shape the future with our cutting-edge technology, creativity, and global perspective.

We seek a pioneering role in the future as in the past, moving forward with the goal of being one of the top three companies in the world.

Glass plays one of the most important roles in today's architectural design approach that we can briefly define as transparent, sustainable, dynamic, flexible, eco-friendly, and establishing a relationship with its surroundings respectfully and modestly.

Architects, who combine creativity with the unique properties of glass, bring this magical material to life via their projects and reveal the beauty of the world by their endless imagination on this extraordinary material. With their dedication to design and creating an ideal world, architects are in a way the authors of the best stories in human life as their projects deeply affect people's lives.

Today, we are pleased to present to all our solution partners and our sector, the third of the "Reference Projects" book. We would like to express our thanks to everyone who contributed to the realization of the projects in the book.

We hope to carry out many more projects together throughout our journey.

**Şişecam**  
**"Glass Solution Partner of your projects"**

## Reference Projects 2021 Şişecam Flat Glass

### Editor

Özgür Konuk  
T. +90 505 807 63 94

### Graphic Design & Layout, Illustrations & Cover

Mehmet Onur Akdeniz, Özgür Konuk, Ercan Timuçin Salihoğlu, Hilal Torun

### Coordinated by Modern Sanatlar

Özgür Konuk

### Photography Credits

Ali Bekman **57**  
Alper Tüzünoğlu **195** (Kuzu Effect)  
Altkat Architectural Photography **141**  
Büşra Yeltekin **25, 26, 27**  
BV Studio **93, 129, 155, 169, 179, 191**, (Allegro Rehabilitation Center), **194** (RIU Palace), **196** (Arena Shumen),  
**200** (Palah Center), **208** (Verde Boyana)  
Cemal Emden **49, 50, 51, 61, 62, 63, 69, 133, 134, 135, 173, 175, 192** (Bodrum Demirbükü Houses Club House),  
**195** (Bayrampasa Vocational and Technical Anatolian High School), **198** (Esenyurt Rifat Ilgaz Middle School)  
Emre Dörter **29, 30, 31, 33, 34, 35, 43, 55, 119**  
Egemen Karakaya, Emre Dörter, Murat Germen **193** (Troy Museum)  
Engin Gerçek (Studio Majo) **153, 192** (Istanbul Museum of Painting & Sculpture)  
Gürkan Akay **37, 38, 39, 121, 122, 123**  
İbrahim Özbunar **59**  
MIR, NAARO **19, 20, 21**  
Modern Sanatlar (Özgür Konuk) **13, 14, 15, 16, 17, 47, 81, 91, 95, 105, 115, 127, 171, 177, 181, 183, 189, 197** (Vadistanbul Park)  
**198** (Nursanlar Kartal), **199** (Queen Bomonti),  
**201** (Akfen Bulvar Loft), **203** (Moment Kartal)  
Sena Özfiliz **71**  
Soner Gürsoy **79**  
Şener Yılmaz Aslan **109, 110, 111**  
Thomas Mayer & Cemal Emden **73, 74, 75**  
Yerçekim **45, 97, 98, 99, 145, 146, 147, 165, 167, 194** (Folkart Ardıç)  
Yunus Özkazanç, Aylin Köse **207** (Merkez Ankara Showroom & Sales Office)  
ZM Yasa Architecture Photography **85, 86, 87**

### Image Editor

Hasan Alper Araz, Özgür Konuk

### Printed by

Arkadaş Basım  
Kazım Karabekir Caddesi Sütçüoğlu İş Hanı No:37/4  
Ulus Ankara  
T. +90 312 341 63 10  
www.arkadasbasim.com.tr

All rights reserved by Türkiye Şişe ve Cam Fabrikaları A.Ş. The reproduction of the whole or parts of the book by photocopying, offset, duplication, electronic or other means may only be possible with the written approval of Türkiye Şişe ve Cam Fabrikaları A.Ş.

It is not obligatory to carry a banderole within the framework of the 2nd paragraph of the 5th article of the Regulation on the Procedures and Principles Regarding the Bandrol Application.

### Türkiye Şişe ve Cam Fabrikaları A.Ş.

İçmeler Mah. D-100 Karayolu Cad. 44A 34947 Tuzla / İstanbul  
T. +90 850 206 50 50  
F. +90 850 206 40 40

archglass@sisecam.com  
sisecam.com

# INDEX

- 13** ISTANBUL AIRPORT & AIR TRAFFIC CONTROL TOWER  
ISTANBUL - TURKEY
- 19** ISTANBUL TV & RADIO TOWER  
ISTANBUL - TURKEY
- 25** KUMPORT  
ISTANBUL - TURKEY
- 29** THE MUSEUM HOTEL ANTAKYA  
ANTAKYA - TURKEY
- 33** SIPOPO CONGRESS CENTER  
MALABO - EQUATORIAL GUINEA
- 37** EURASIA TUNNEL OPERATION & MAINTENANCE BUILDING  
ISTANBUL - TURKEY
- 43** RADISSON BLU HOTEL & CONFERENCE CENTER  
NIAMEY-NIGER
- 45** FOLKART HILLS  
IZMIR - TURKEY
- 47** VADIKORU  
ISTANBUL - TURKEY
- 49** TARSUS AMERICAN COLLEGE TAC-SEV NEW CAMPUS  
MERSIN - TURKEY
- 55** KIGALI MULTIFUNCTIONAL SPORTS ARENA  
KIGALI - RWANDA
- 57** AHK KNDU VILLAS  
ANTALYA - TURKEY

<b>OZU AB4 FACULTY OF ARCHITECTURE &amp; DESIGN</b> ISTANBUL - TURKEY	<b>59</b>
<b>HYATT HOUSE</b> KOCAELI - TURKEY	<b>61</b>
<b>THE NIELS BOHR BUILDING (NBB)</b> COPENHAGEN - DENMARK	<b>67</b>
<b>DALAMAN INTERNATIONAL AIRPORT TERMINAL II</b> MUGLA - TURKEY	<b>69</b>
<b>TURKISH AIRLINES AVIATION ACADEMY</b> ISTANBUL - TURKEY	<b>71</b>
<b>S2OSB HEDQUARTERS &amp; CONFERENCE HALL</b> SAKARYA - TURKEY	<b>73</b>
<b>SWISSOTEL RESORT BODRUM BEACH</b> MUGLA - TURKEY	<b>79</b>
<b>SEBA OFFICE BOULEVARD</b> ISTANBUL - TURKEY	<b>81</b>
<b>PRISTINA ADEM JASHARI INTERNATIONAL AIRPORT</b> PRISTINA - KOSOVO	<b>83</b>
<b>IAOIZ NU PROFESSIONAL &amp; TECHNICAL HIGH SCHOOL</b> IZMIR - TURKEY	<b>85</b>
<b>ILBANK REGIONAL HEADQUARTERS</b> ISTANBUL - TURKEY	<b>91</b>
<b>ELLIPSE CENTER</b> SOFIA - BULGARIA	<b>93</b>
<b>TURKUVAZ MEDIA CENTER</b> ISTANBUL - TURKEY	<b>95</b>
<b>SAMSUN MULTIPURPOSE HALL</b> SAMSUN - TURKEY	<b>97</b>
<b>KARAT 34</b> ISTANBUL - TURKEY	<b>103</b>
<b>BUMERANG KARTAL</b> ISTANBUL - TURKEY	<b>105</b>

<b>107</b> <b>NEW CONFERENCE HALL OF NATIONAL ASSEMBLY SOFIA</b> SOFIA - BULGARIA
<b>109</b> <b>ERSA SHOWROOM IDEAS HOUSE</b> ISTANBUL - TURKEY
<b>115</b> <b>GENERAL DIRECTORATE OF STATE HYDRAULIC WORKS</b> ANKARA - TURKEY
<b>117</b> <b>G BEYOND BODRUM</b> MUGLA - TURKEY
<b>119</b> <b>DAKAR ARENA</b> DAKAR - SENEGAL
<b>121</b> <b>ARDEN MEDICAL FACTORY</b> ANKARA - TURKEY
<b>127</b> <b>AND PASTEL</b> ISTANBUL - TURKEY
<b>129</b> <b>SAINT SOFIA HOSPITAL</b> SOFIA - BULGARIA
<b>131</b> <b>GLOBAL DREAM OFFICES</b> MERSIN - TURKEY
<b>133</b> <b>ODTÜ TEKNOKENT INNOVATION CENTER</b> ANKARA - TURKEY
<b>139</b> <b>KUZU KUMRU</b> ANKARA - TURKEY
<b>141</b> <b>YOZGAT AQUAPARK</b> YOZGAT - TURKEY
<b>143</b> <b>275 FOURTH AVENUE</b> NEW YORK - USA
<b>145</b> <b>ÇANKAYA UNIVERSITY CENTER FOR CONGRESS &amp; CULTURE</b> ANKARA - TURKEY
<b>151</b> <b>NOVUS VENTUS TOWERS</b> IZMIR - TURKEY
<b>153</b> <b>KEMER LIFE XXIII</b> ISTANBUL - TURKEY



- ST. GEORGE INTERNATIONAL SCHOOL & PRESCHOOL** 155  
SOFIA - BULGARIA
- OZU DORM 6** 157  
ISTANBUL - TURKEY
- ÇITLIK HOUSE** 159  
MUĞLA - TURKEY
- TAŞKESİK HOUSE** 161  
MUĞLA - TURKEY
- SAMSUN GOLF CLUB** 165  
SAMSUN - TURKEY
- BEYLIKDÜZÜ ARTS & CULTURAL CENTER (RENOVATION)** 167  
ISTANBUL - TURKEY
- KITE BUILDING** 169  
SOFIA - BULGARIA
- 1071 ANKARA** 171  
ANKARA - TURKEY
- THE MERCER** 173  
IZMIR - TURKEY
- ALI FUAT CEBESOY ANATOLIAN HIGH SCHOOL** 175  
ISTANBUL - TURKEY
- SMK TOWER** 177  
ANKARA - TURKEY
- FLORA PARK** 179  
BURGAS - BULGARIA
- BAŞKENT EMLAK KONUTLARI** 181  
ANKARA - TURKEY
- IT VALLEY** 183  
ISTANBUL - TURKEY
- DESIGN HOTEL** 185  
DUHOK - IRAQ
- THE SMILE ACADEMY DENTAL POLYCLINIC** 187  
GAZIANTEP - TURKEY

- 189 ELMAR TOWERS**  
ANKARA - TURKEY
- 191 ODELO FARBA FACTORY**  
PLOVDIV - BULGARIA
- 192 ISTANBUL MUSEUM OF PAINTING & SCULPTURE**  
ISTANBUL - TURKEY
- ERCIYAS HOLDING HEADQUARTERS**  
ISTANBUL - TURKEY
- BODRUM DEMIRBÜKÜ HOUSES CLUB HOUSE**  
MUĞLA - TURKEY
- 193 ALLEGRO REHABILITATION CENTER**  
SOFIA - BULGARIA
- MATLI PLAZA**  
BURSA - TURKEY
- TROY MUSEUM**  
ÇANAKKALE - TURKEY
- 194 FOLKART ARDIÇ**  
IZMIR - TURKEY
- RIU PALACE**  
ST VLAS - BULGARIA
- 195 BAYRAMPAŞA VOCATIONAL & TECHNICAL ANATOLIAN HIGH SCHOOL**  
ISTANBUL - TURKEY
- KUZU EFFECT**  
ANKARA - TURKEY
- 196 IZMIR CHAMBER OF COMMERCE NEW SERVICE BUILDING**  
IZMIR - TURKEY
- ARENA SHUMEN**  
SHUMEN - BULGARIA
- 197 VADISTANBUL**  
ISTANBUL - TURKEY
- WYNDHAM HOTEL**  
BATUMI - GEORGIA

- NURSANLAR KARTAL** 198  
ISTANBUL - TURKEY
- ESENYURT RIFAT ILGAZ MIDDLE SCHOOL**  
ISTANBUL - TURKEY
- GREEN TOWER** 199  
LA PAZ - BOLIVIA
- QUEEN BOMONTI**  
ISTANBUL - TURKEY
- YDA SÖĞÜTÖZÜ RESIDENCES & OFFICES** 200  
ANKARA - TURKEY
- PALAH CENTER**  
VARNA - BULGARIA
- GÖL PANORAMA HOUSES** 201  
ISTANBUL - TURKEY
- AKFEN BULVAR LOFT**  
ANKARA - TURKEY
- IZMIR FOÇA BIOGAS FACILITY & ADMINISTRATION** 202  
IZMIR - TURKEY
- ISTANBUL 216**  
ISTANBUL - TURKEY
- MOMENT KARTAL** 203  
ISTANBUL - TURKEY
- ATA CORNER LÜLEBURGAZ**  
KIRKLARELI - TURKEY
- EKMAS MAVİŞEHİR** 204  
IZMIR - TURKEY
- NEF ATAKÖY 22**  
ISTANBUL - TURKEY
- PROF. DR. CEMIL TAŞCIOĞLU CITY HOSPITAL**  
ISTANBUL - TURKEY
- BAŞAKŞEHİR ÇAM & SAKURA CITY HOSPITAL** 205  
ISTANBUL - TURKEY

- 205 IZMIR BAYRAKLI INTEGRATED HEALTHCARE CAMPUS**  
IZMIR - TURKEY
- TOYA MODA**  
ISTANBUL - TURKEY
- 206 FOLKART TIME**  
IZMIR - TURKEY
- DURU BEYTEPE**  
ANKARA - TURKEY
- GROZNY STATE OIL TECHNICAL UNIVERSITY**  
GROZNY - RUSSIA
- 207 MARRIOT HOTEL IZMIR**  
IZMIR - TURKEY
- MERKEZ ANKARA SHOWROOM & SALES OFFICE**  
ANKARA - TURKEY
- MERKEZ ANKARA**  
ANKARA - TURKEY
- 208 ATABILGE INCEK RESIDENCES**  
ANKARA - TURKEY
- VERDE BOYANA**  
SOFIA - BULGARIA
- 209 ROMELL AETHER**  
MUMBAI - INDIA
- NIGER TOWER**  
CONAKRY - REPUBLIC of GUINEA
- 210 TOWER 27**  
CALIFORNIA - USA
- KALPATARU AVANA PAREL**  
MUMBAI - INDIA
- 211 SEA ONE**  
CONSTANTA - ROMANIA
- ISHO**  
TIMISOARA - ROMANIA



# ISTANBUL AIRPORT & AIR TRAFFIC CONTROL TOWER

ISTANBUL

## FAÇADE GLASS

ŞİŞECAM  
TEMPERABLE  
SOLAR CONTROL  
LOW-E GLASS  
(special production)

## SKYLIGHT

ŞİŞECAM  
TEMPERABLE  
SOLAR CONTROL  
LOW-E GLASS  
NEUTRAL 41/27

## ARCHITECTURAL DESIGN

**Grimshaw Architects, Haptic Architects,  
Nordic Office of Architecture  
AECOM and Pininfarina (Air Traffic Control Tower)**

## INVESTOR

**DHMI (General Directorate of State Airports Authority of Turkey)  
Kalyon – Cengiz – Mapa – Limak Joint Venture (IGA)**

## FAÇADE CONSULTANT

**WINTECH Façade Engineering Consultancy**

## GLASS PROCESSOR

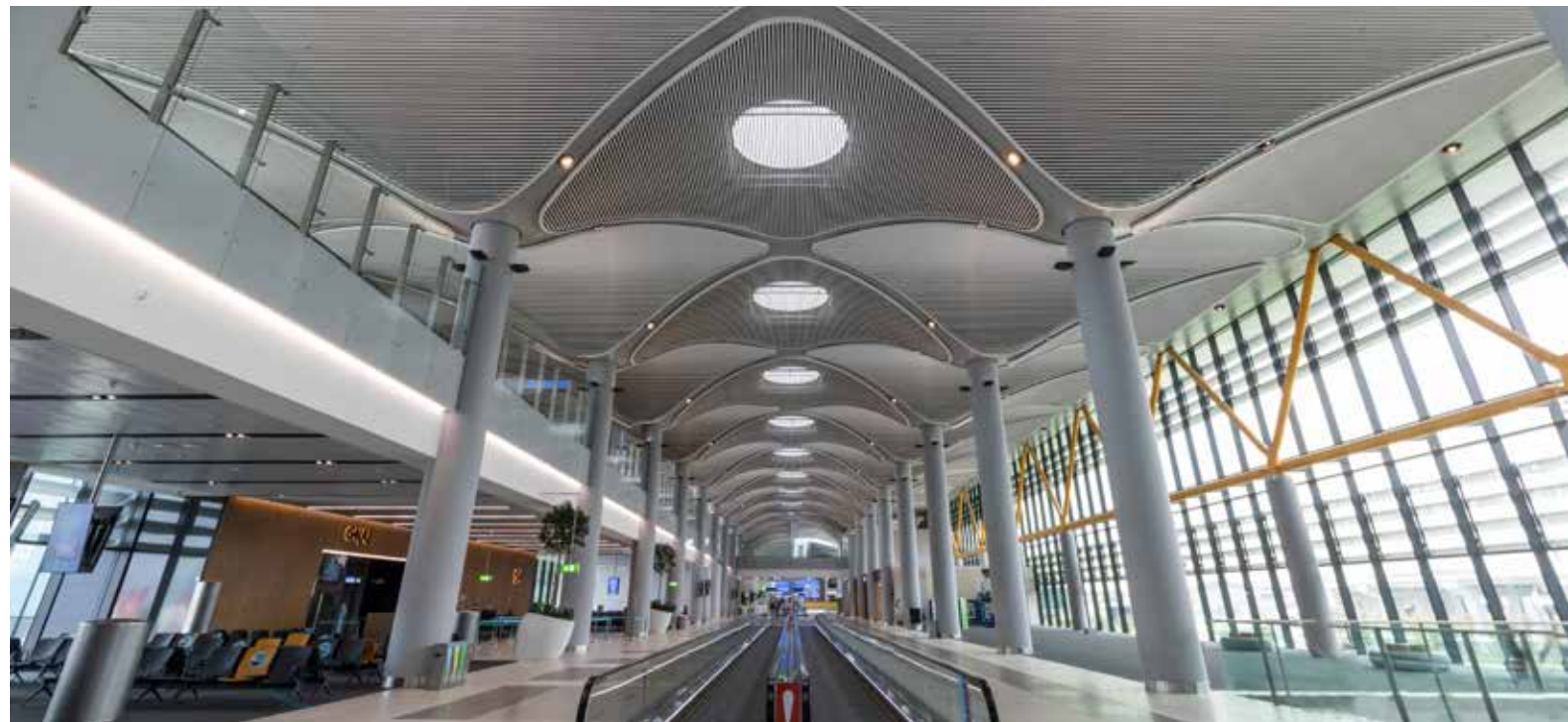
**Antcam, Ardiç Cam, Camyapı, Yakut Cam, Yıldız Cam**













# ISTANBUL TV & RADIO TOWER

ISTANBUL

## FAÇADE GLASS

ŞİŞECAM  
TINTED FLOAT GLASS  
GREY

ŞİŞECAM  
LAMINATED  
LOW-E GLASS

ARCHITECTURAL DESIGN

**Melike Altinisik Architects - MAA**

INVESTOR

**UDHB – Ministry of Transportation and Communication**

FAÇADE CONSULTANT

**Newtecnic Facade Engineering**

GLASS PROCESSOR

**Temka Glass, Trakya Group Glass**











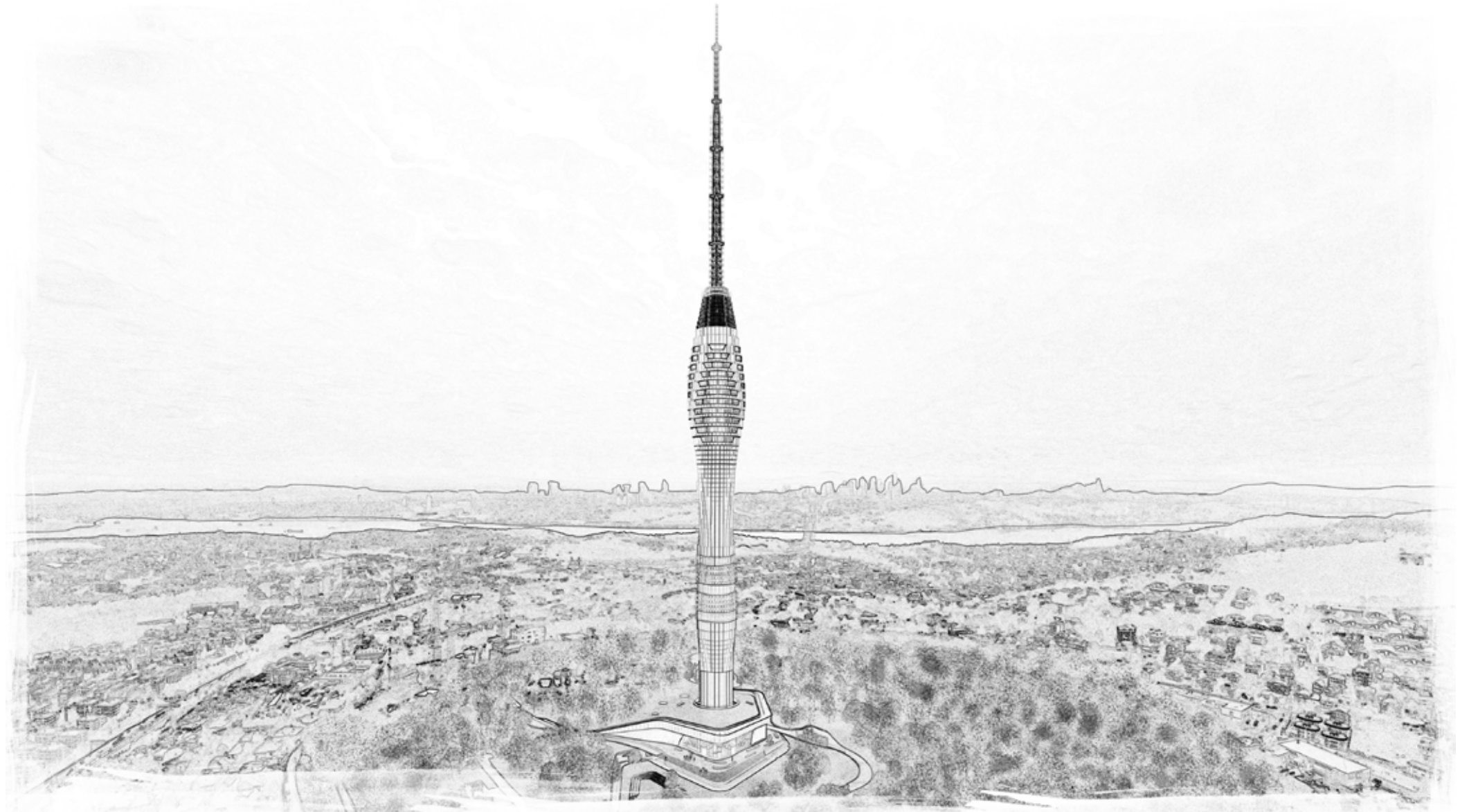
The art of natural lighting allows the designer to use light as a design material in the design process, as well as shaping the space and designing extraordinary spaces.

**The relationship between architecture and light is shaped by physical environmental conditions, architectural space is created by limiting the space to surfaces. In this context, glass plays one of the most important roles and the magic of extraordinary elegance in the space is hidden in its transparency. Light spatializes the space while enriching the function of the space besides that it makes an emotional contribution to the users of that space.**

The light creates a transition between mysterious shadows and sharp colors in the futuristic design of Istanbul TV and Radio Tower rising 369m. The design resembles an organic natural system in such a complex where elegant compositions are naturally processed and cannot be easily separated from the whole. Balanced design established by the trio of light, curved surfaces, and mysterious shadows, the function of the architectural form, and the space it borders, creates visual integrity in accordance with the character of the design. The tower offers an adventure focused on nature and landscape.

**The contribution of glass surfaces to the form that takes its existence from the strong bond it establishes with light, actually says a lot in regards to glass.** "Panorama Elevators" rising on both sides of the tower are architectural elements that both feed and divide the monolithic body. Visitors have the opportunity to watch Istanbul from the observation floors and restaurant floors at an altitude of about 400 meters above sea level, while experiencing a vertical journey that extends 180 meters across the Historical Peninsula and the Black Sea coast on the other, with panorama lifts. **In this adventure, thanks to the grey tinted glass that form a threshold between the exterior and the interior, while the thermal comfort conditions are optimally provided for the users, also they assume the necessary role in the formation of spatial continuity between the interior and the exterior through the opacity and contrast offered in the façade setup.**

**Thus the tower offers an adventure focused on nature and scenery.**





# KUMPORT

ISTANBUL

## FAÇADE GLASS

ŞİŞECAM  
TEMPERABLE  
SOLAR CONTROL  
LOW-E GLASS  
NEUTRAL 62/44

ARCHITECTURAL DESIGN  
**KG Mimarlık**

INVESTOR  
**Kumport Port Services and Logistics Industry Trade Co.**

GLASS PROCESSOR  
**Yıldız Cam**







# THE MUSEUM HOTEL ANTAKYA

ANTAKYA

## FAÇADE GLASS

ŞİŞECAM  
TEMPERABLE  
LOW-E GLASS  
NEUTRAL 71/53

ŞİŞECAM  
ULTRA CLEAR  
LAMINATED GLASS

ARCHITECTURAL DESIGN  
**EAA - Emre Arolat Architecture**

INVESTOR  
**ASF Hospitality and Tourism Business**

FAÇADE CONSULTANT  
**Axis Façade**

GLASS PROCESSOR  
**Camyapi**









# SIPOPO CONGRESS CENTER

EQUATORIAL GUINEA

## FAÇADE GLASS

ŞİŞECAM  
TEMPERABLE  
SOLAR CONTROL  
LOW-E GLASS  
NEUTRAL 62/44

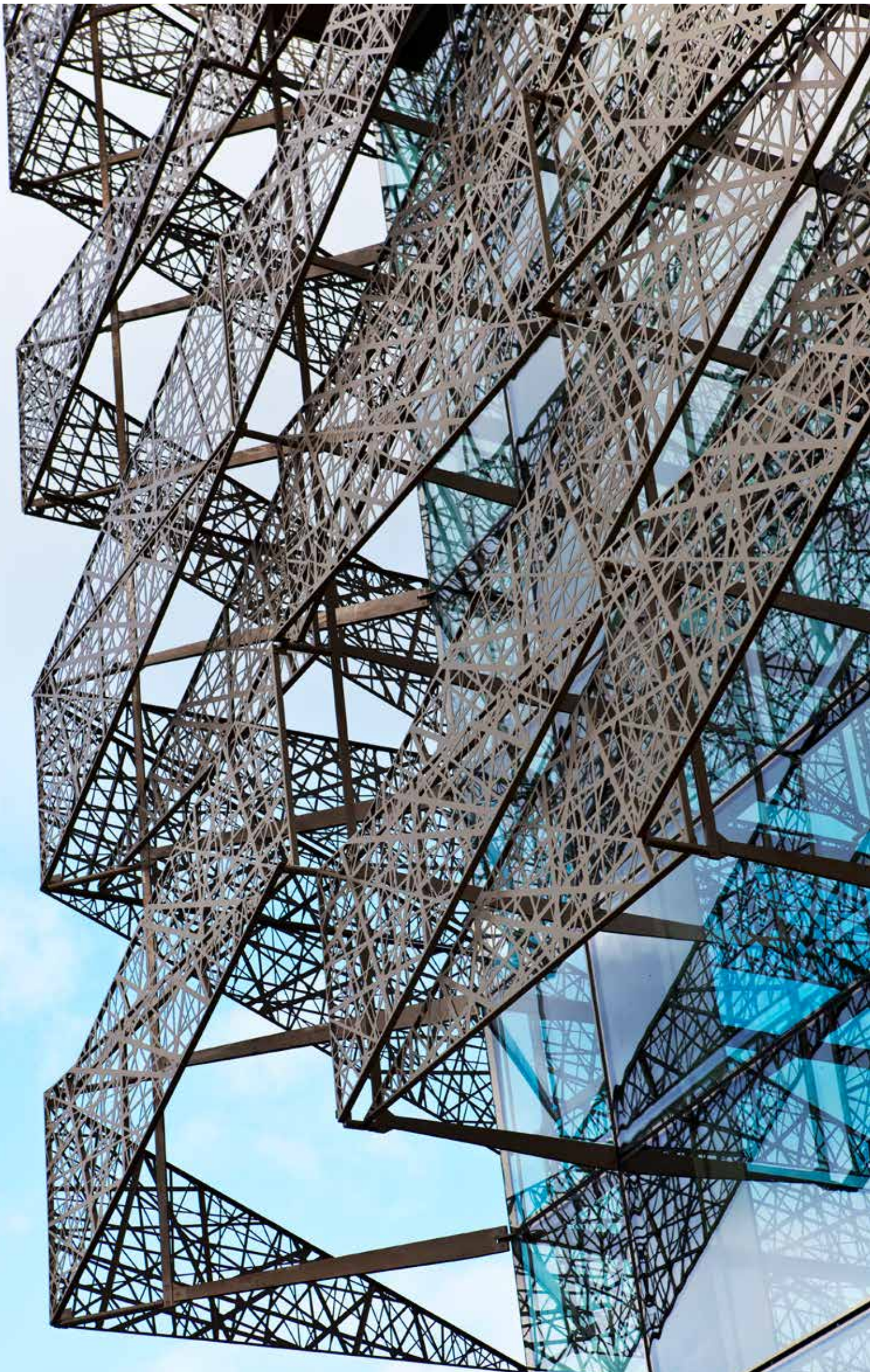
ŞİŞECAM  
TENTESOL TITANIUM  
SILVER

ARCHITECTURAL DESIGN  
**Tabanlıoğlu Architects**

INVESTOR  
**Oficina Nacional de Planificación Y Seguimiento  
de Proyectos de Guinea Ecuatorial "GE-Proyectos"**









# EURASIA TUNNEL OPERATION & MAINTENANCE BUILDING

ISTANBUL

## INCLINED FAÇADE

ŞİSECAM  
TEMPERABLE  
SOLAR CONTROL  
LOW-E GLASS  
NEUTRAL 50/33

## SIDE FAÇADES

ŞİSECAM  
TEMPERABLE  
SOLAR CONTROL  
LOW-E GLASS  
NEUTRAL 62/44

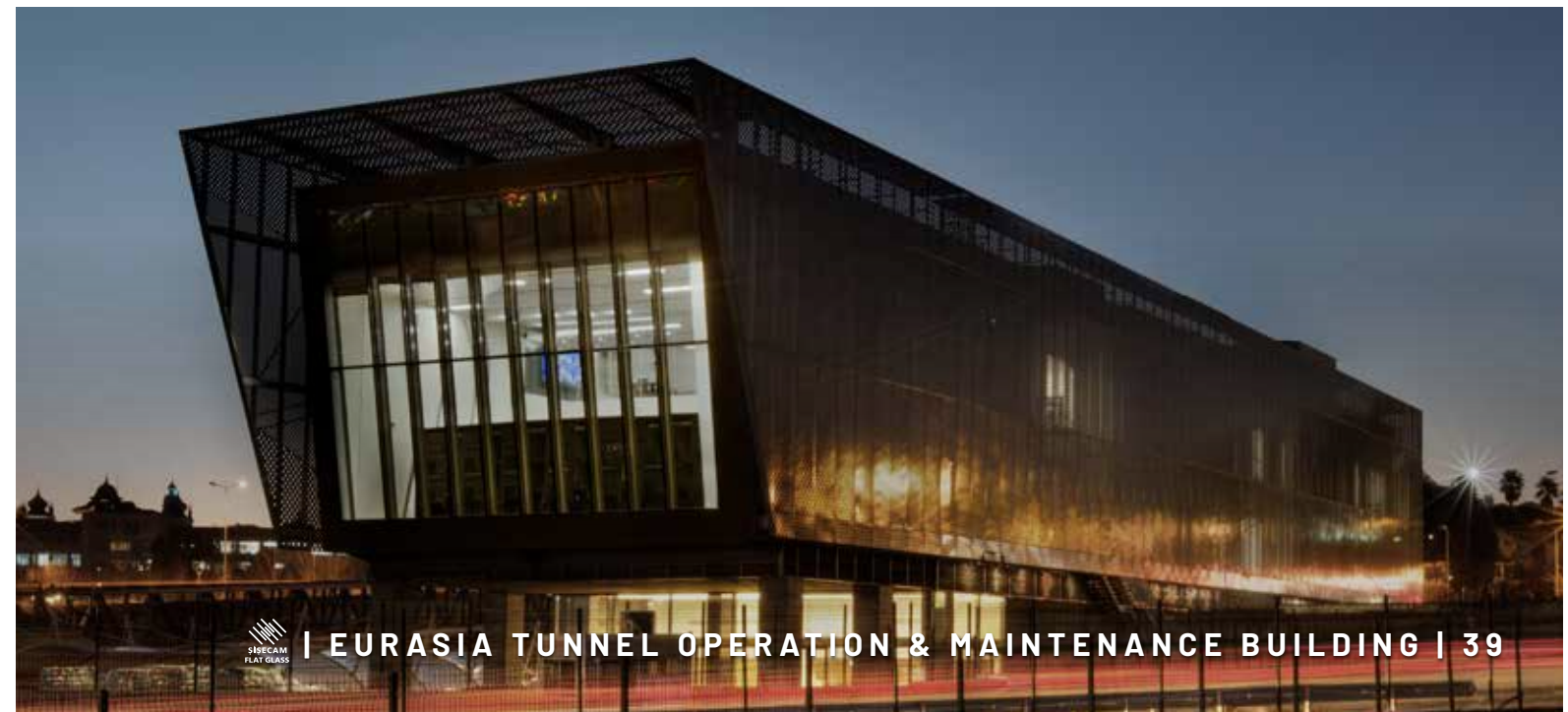
ARCHITECTURAL DESIGN  
GMW MIMARLIK

INVESTOR  
Republic of Turkey Ministry of Transport  
and Infrastructure, Eurasia Tunnel Co.

GLASS PROCESSOR  
Alcam











To address the use of materials in architecture, we need to consider not only their physical properties and technical performances but also their own potential to contribute to design approach, as one of the main design tools and as an active ingredient in design processes. In this context, **we think that glass is a material which enhances our design approach that we can briefly define as transparent, sustainable, dynamic, flexible, honest, adapting to its environment, and establishing a relationship with surroundings respectfully and modestly.**

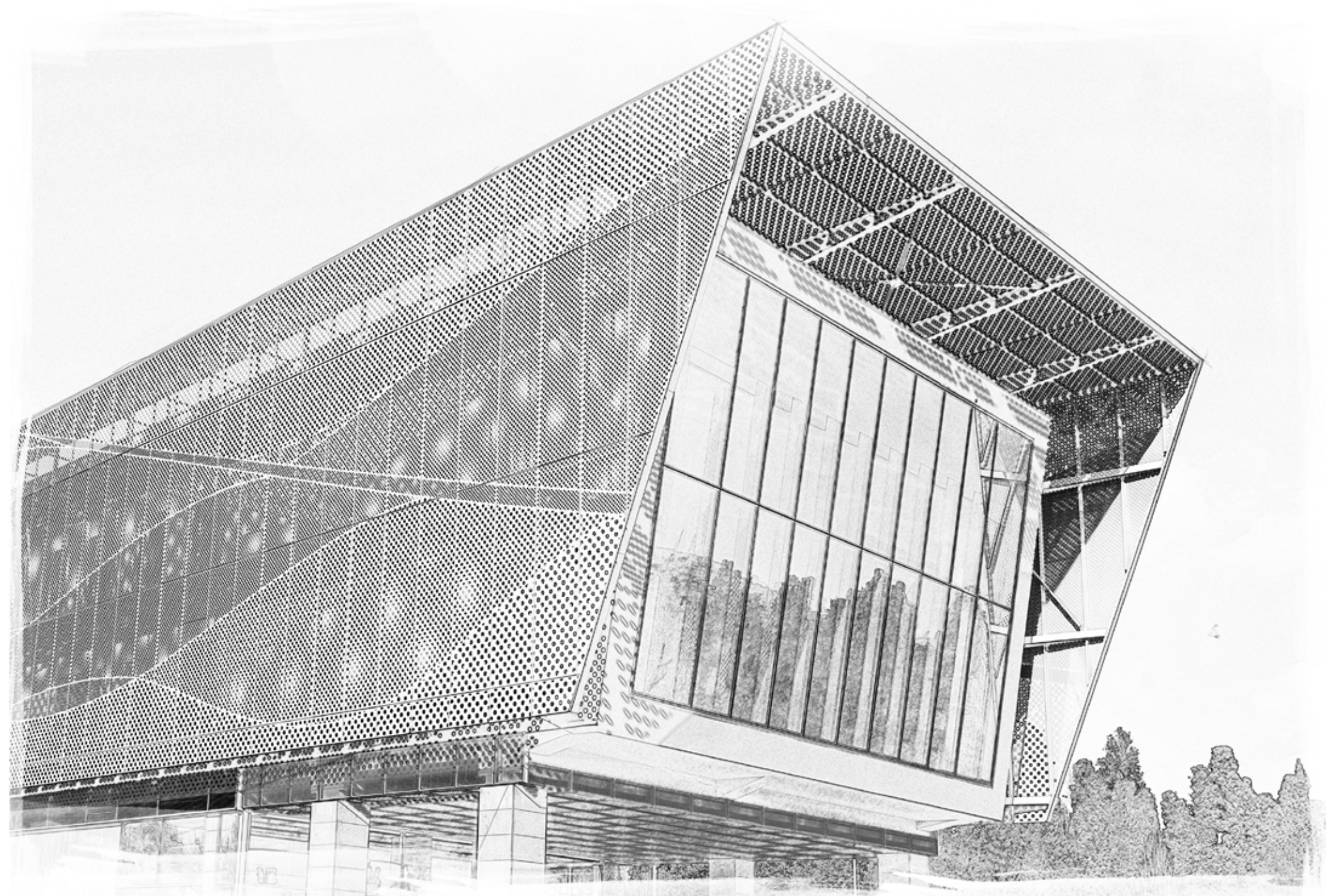
**Although the main purpose to use glass remained the same over the centuries, which can be summarized as 'setting a transparent barrier between inside and outside', it means more in architecture especially in part due to its inherent dualities. Glass is a unique material that exists but looks like it does not; is structurally strong yet visually very light; both visible and invisible; real but also a reflection; limiting, enclosing but at the same time expanding and releasing, in harmony with other materials but also impressive all alone, solid but also fluid.**

The design objective for Operation and Maintenance Building of Eurasia Tunnel has been to create a contemporary building with a distinctive architectural impression, which not only meets its functional and technical requirements but also responds to its immediate context and symbolizes the highest technological level of the Tunnel. The 2-storey tube-like built form of the office building hovers above the ground level maintenance facilities, and also refers to tunnel form.

We proposed a double-skin façade for two long sides of office block, to provide a climatic buffer zone to reduce mechanical ventilation loads on the southwest facing façade and to serve privacy on the northeast side which is in close vicinity to a public road.

**The outer skin is formed in perforated metal panels. Şişecam Temperable Solar Control Low-E Glass Neutral 62/44 has been used for the glazed parts of the inner skin, to provide the required structural, thermal, acoustical, solar control, and light transmittance performances, all in accordance with international standards.**

**The façade of the main operation room, requiring a direct view to the tunnel entrance, is a single skin fully glazed façade. It has been inclined to reduce reflection and provide a clear view. Şişecam Temperable Solar Control Low-E Glass Neutral 50/33 has been used for this façade. The outer pane of double glass units of this façade is specified as laminated due to safety reasons.**





# RADISSON BLU HOTEL & CONFERENCE CENTER

NIGER

## FAÇADE GLASS

ŞİŞECAM  
TEMPERABLE  
SOLAR CONTROL  
LOW-E GLASS  
NEUTRAL 50/33

ARCHITECTURAL DESIGN  
**Avcı Architects**

INVESTOR  
**Summa**





# FOLKART HILLS

IZMIR

## FAÇADE GLASS

ŞİŞECAM  
TEMPERABLE  
SOLAR CONTROL  
LOW-E GLASS  
NEUTRAL 62/44

ARCHITECTURAL DESIGN  
**Dilekci Architects (DDA)**

INVESTOR  
**Folkart**

FAÇADE CONSULTANT  
**Bağlan Mimarlık**

GLASS PROCESSOR  
**Aras Cam**



# VADI KORU

ISTANBUL

## FAÇADE GLASS

ŞİŞECAM  
TEMPERABLE  
SOLAR CONTROL  
LOW-E GLASS  
NEUTRAL 70/37

ŞİŞECAM  
TEMPERABLE  
SOLAR CONTROL  
LOW-E GLASS  
NEUTRAL 41/27

ARCHITECTURAL DESIGN  
**İki Design Group**

INVESTOR  
**Invest Group**

GLASS PROCESSOR  
**Yıldız Cam**

Vadikoru





# TARSUS AMERICAN COLLEGE TAC-SEV NEW CAMPUS

MERSIN

## FAÇADE GLASS

ŞİŞECAM  
TEMPERABLE  
SOLAR CONTROL  
LOW-E GLASS  
NEUTRAL 50/33

ARCHITECTURAL DESIGN  
**Erginoğlu & Çalışlar Architects**

INVESTOR  
**Health & Education Foundation (SEV)**

FAÇADE CONSULTANT  
**Mimpa**



Geleceğin güvencesi sizlerin temelleri üzerindeki eğitimin ve öğrenimin düzeyidir.





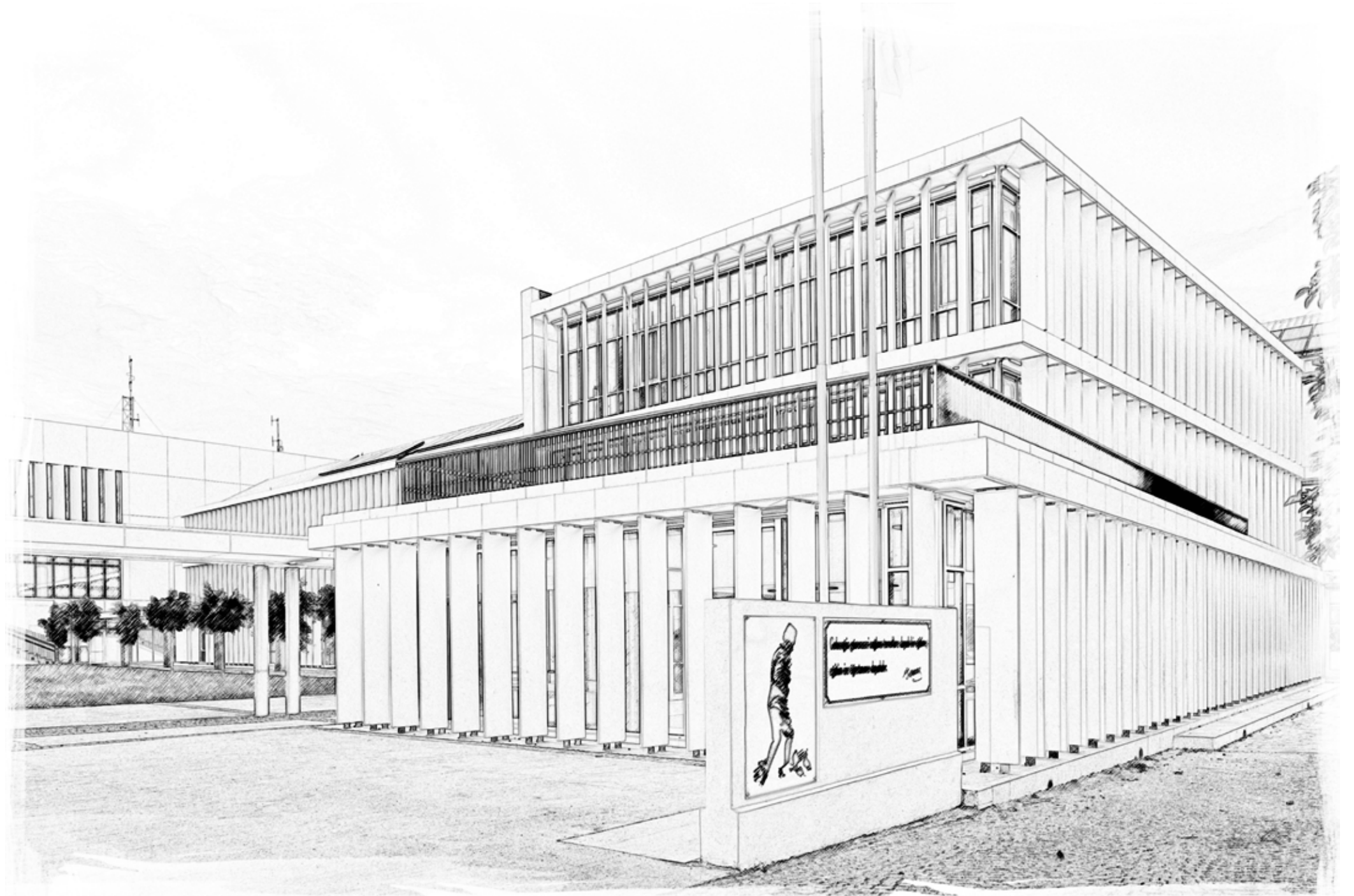




One of the warmer points of the Mediterranean, Tarsus often experiences mild winters with the lowest average temperature reaching 7 degrees Celsius in high winter. The weather stays generally warm throughout the year. Orientation thus becomes a significant design principle for a campus located in a climate that requires cooling, rather than heating. Climatization measures taken in and outside the building are supported by trees in the landscape, sunblinds on the façade, and canopies that create a pathway in the garden. In addition, the building positioning is designed in line with the existing campus and direction. **Since the design aims to provide maximum use of solar energy and the utilization of this energy in the heating system of the campus, the southward roofs of the buildings feature solar panels.**

The school building is designed in a way that creates a courtyard with the historic Sadık Pasha Mansion, which is planned to be converted into a library in the future. As the classrooms are located in line with the natural light coming in from the north, the areas exposed to the strong southern sun are shadowed with panels set on the exterior of the building and designed as corridors.

**Especially in school projects; security is one of the main topics, therefore the usage of glass is a quite sensitive subject. That's why we were more attentive in the election process and took it very seriously. For the exterior of the building, we preferred tempered glass, on the other hand, in the inner space of the building we chose to use laminated glass which gave safety and security. On the outer pane of double insulating glass units, we chose Şişecam Temperable Solar Control Low-E Glass Neutral 50/33 that provided solar control and gave us a better architectural environment and a healthier educational atmosphere.**





# KIGALI MULTI FUNCTIONAL SPORTS ARENA

RWANDA

## FAÇADE GLASS

ŞİŞECAM  
TEMPERABLE  
SOLAR CONTROL  
LOW-E GLASS  
NEUTRAL 58/32

# KIGALI ARENA

ARCHITECTURAL DESIGN  
**Yazgan Design Architecture Inc.**

INVESTOR  
**Summa Inc.**

GLASS PROCESSOR  
**Çıraylar Cam**





# AHK KNDU VILLAS

ANTALYA

## FAÇADE GLASS

ŞİŞECAM  
TEMPERABLE  
SOLAR CONTROL  
LOW-E GLASS  
NEUTRAL 62/44

ARCHITECTURAL DESIGN  
**GAD Architecture**

INVESTOR  
**AHK**

GLASS PROCESSOR  
**Camsaş**



ŞİŞECAM  
FLAT GLASS



# OZU AB4 FACULTY OF ARCHITECTURE & DESIGN

ISTANBUL

## FAÇADE GLASS

ŞİŞECAM  
TEMPERABLE  
SOLAR CONTROL  
LOW-E GLASS  
NEUTRAL 50/33

ARCHITECTURAL DESIGN  
**ARK & BG Architects**

INVESTOR  
**Özyeğin University**

FAÇADE CONSULTANT  
**FMT Facade Consultants**

GLASS PROCESSOR  
**Anadolu Cam**















CM Design  
and Architecture  
Cem  
SORGUÇ



**The project is located in Gebze region, facing the south-north direction. Therefore, daylight and heat control become very important.**

180 hotel rooms are placed on the south side of the building to take advantage of the open view. Horizontal circulation on hotel floors is designed as a linear corridor on the north side. Functions on ground and mezzanine floors are designed as common/social areas in an open-plan typology.

Hotel floors' corridors are placed on the north side, facing the shopping center's mechanical area, so that the rooms face the south direction and the open view. To prevent excessive heat and sunlight on the south façade, the rooms are set back by user-accessible balconies.

**Glass selection of the south direction was important in order to prevent the negative effects of the direction. Due to this reason a high performance low reflective glass Şişecam Temperable Solar Control Low-E Glass Neutral 70/37 was chosen in the south direction. A solid / enamel painted glass surface was designed and applied to prevent both circulation and unpleasant views in the north direction.**



# THE NIELS BOHR BUILDING

DENMARK

THE PYRAMID-SHAPED  
OUTER FAÇADE

 ŞİŞECAM  
ULTRA CLEAR  
FLOAT GLASS

ARCHITECTURAL DESIGN  
**Christensen & Co + Vilhelm Lauritzen Architects**

INVESTOR  
**The Danish Building and Property Agency and the University of Copenhagen**

GLASS PROCESSOR  
**Yıldız Cam**





# DALAMAN INTERNATIONAL AIRPORT TERMINAL II

MUGLA

## FAÇADE GLASS

ŞİŞECAM  
TEMPERABLE  
SOLAR CONTROL  
LOW-E GLASS  
NEUTRAL 50/33

## SKYLIGHT & PASSENGER BOARDING BRIDGE

ŞİŞECAM  
TEMPERABLE  
SOLAR CONTROL  
LOW-E GLASS  
GREY 21/18

ARCHITECTURAL DESIGN  
**EAA - Emre Arolat Architecture**

INVESTOR  
**State Airports Authority - YDA**

FAÇADE CONSULTANT  
**Aluma Yapı Sistemleri**

GLASS PROCESSOR  
**Antcam**



# TURKISH AIRLINES AVIATION ACADEMY

ISTANBUL

## FAÇADE GLASS

ŞİŞECAM  
TEMPERABLE  
SOLAR CONTROL  
LOW-E GLASS  
NEUTRAL 50/33

ARCHITECTURAL DESIGN

**Tago Architects**

INVESTOR

**Turkish Airlines**

GLASS PROCESSOR

**Yıldız Cam**



TURKISH  
FLIGHT TRAINING  
CENTER





# S20SB HEADQUARTERS & CONFERENCE HALL

SAKARYA

## FAÇADE GLASS

 **ŞİŞECAM**  
TEMPERABLE  
SOLAR CONTROL  
LOW-E GLASS  
NEUTRAL 50/33

ARCHITECTURAL DESIGN  
**BINAA - Building Innovation Arts Architecture**

INVESTOR  
**Sakarya 2nd Industrial District Management**

GLASS PROCESSOR  
**Sar Cam**











BINAA -  
Building Innovation  
Arts Architecture  
**Burak  
PEKOĞLU**

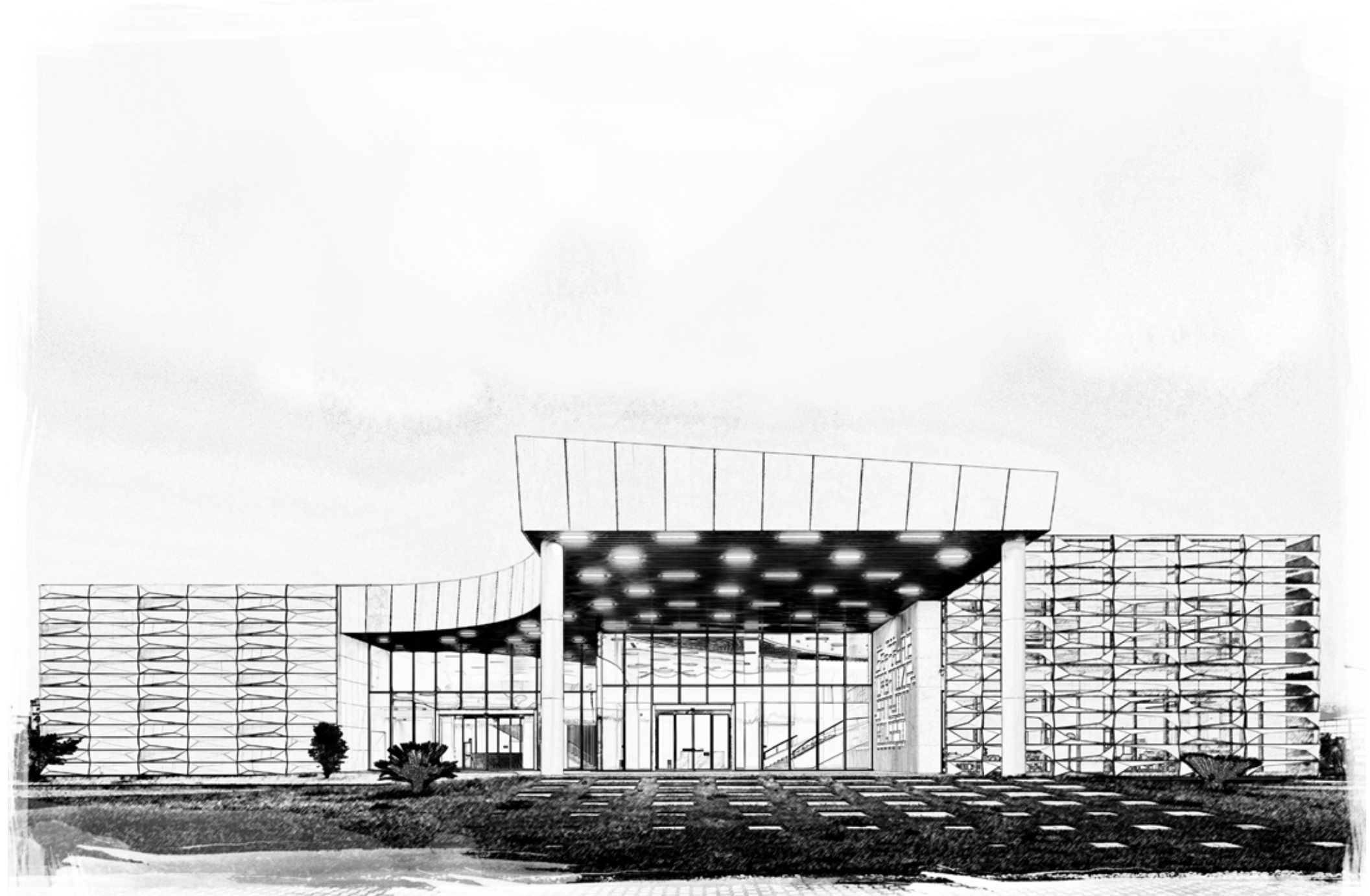
With the realization of our designs, the practice of using glass in our designs allows us to discover different perspectives. The use of glass in a building is a basic discovery tool for how we want to transmit and reflect daylight into a space. When we look from inside to outside and outside to inside, it helps us to construct the integrity of perception between space and structural mass.

In architecture, how you open a window is one of the most important elements of façade design, has made glass a focus as a material. In the 1920s, Le Corbusier said, "The history of architecture is the story of the struggle for the window." This statement continues to be valid today.

A façade is a form of expression between the user and the environment in which the building is located. It is necessary to design by considering different dynamics in terms of performance, static, function, and aesthetics. It takes concentration and mastery to create the correct openings that showcase the surroundings by measuring, mowing, cutting, gluing, and trying again and again like a tailor. The relationship between detail and the whole is a tide. **Glass, which is one of the most important subjects of architectural design and an indispensable element of façade design, has different forms and usage purposes in every project and affects our constructing abstract and concrete relations in our designs.**

**As in every project, we made material performance choices with great precision in the design process of the S20SB project. At these points, the interdisciplinary relationship we established with Şişecam Flat Glass came into play. We take care to choose local products as much as possible in our projects. Şişecam Flat Glass provided technical support to us where we can meet on the common ground due to its importance to R&D. We have chosen a glass that is compatible with our project, with the feature required by the architectural design.**

**In our S20SB project, the glass, beyond the glass transparency, provides the opportunity to experience how we can control daylight usage and energy consumption in architecture. The glass (Şişecam Temperable Solar Control Low-E Glass Neutral 50/33) that we selected behind the secondary metal façade for the office areas on the south façade provided the results we wanted in our mechanical calculations. In addition to controlling energy efficiency in common areas, it is an architectural element that we can provide visual continuity between spaces. Although the project is perceived as a closed box from the outside, inside the secondary metal shell, 'glass' surprisingly allows us to experience transparency and spatial continuity inside.**





# SWISSOTEL RESORT BODRUM BEACH

MUGLA

## FAÇADE GLASS

ŞİŞECAM  
TEMPERABLE  
SOLAR CONTROL  
LOW-E GLASS  
NEUTRAL 62/44

ARCHITECTURAL DESIGN  
**GAD Architecture**

INVESTOR  
**Swissotel Hotel&Resorts**





# SEBA OFFICE BOULEVARD

ISTANBUL

## FAÇADE GLASS

ŞİŞECAM  
TEMPERABLE  
SOLAR CONTROL  
LOW-E GLASS  
NEUTRAL 41/27

ARCHITECTURAL DESIGN  
**Koray Yavuzer Mimarlık**

INVESTOR  
**Seba Construction**

FAÇADE CONSULTANT  
**Karakalem Cephe Tasarım**

GLASS PROCESSOR  
**Yıldız Cam**





# PRISTINA ADEM JASHARI INTERNATIONAL AIRPORT

KOSOVO

## FAÇADE GLASS

ŞİŞECAM  
TENTESOL  
BLUE

ŞİŞECAM  
LAMINATED  
LOW-E GLASS

ARCHITECTURAL DESIGN  
**Tekeli - Sisa Architectural Partnership**

INVESTOR  
**Republic of Kosovo**





# IAOIZ NU PROFESSIONAL & TECHNICAL PRIVATE HIGH SCHOOL

IZMIR

## FAÇADE GLASS

ŞİŞECAM  
TEMPERABLE  
SOLAR CONTROL  
LOW-E GLASS  
NEUTRAL 62/44

ARCHITECTURAL DESIGN  
**M+D Architecture**

INVESTOR  
**Izmir Atatürk Organized Industrial Zone Management**

GLASS PROCESSOR  
**Dost Cam**

Özel  
IAOIZ Nedim Uysal  
Mesleki ve Teknik Anadolu Lisesi





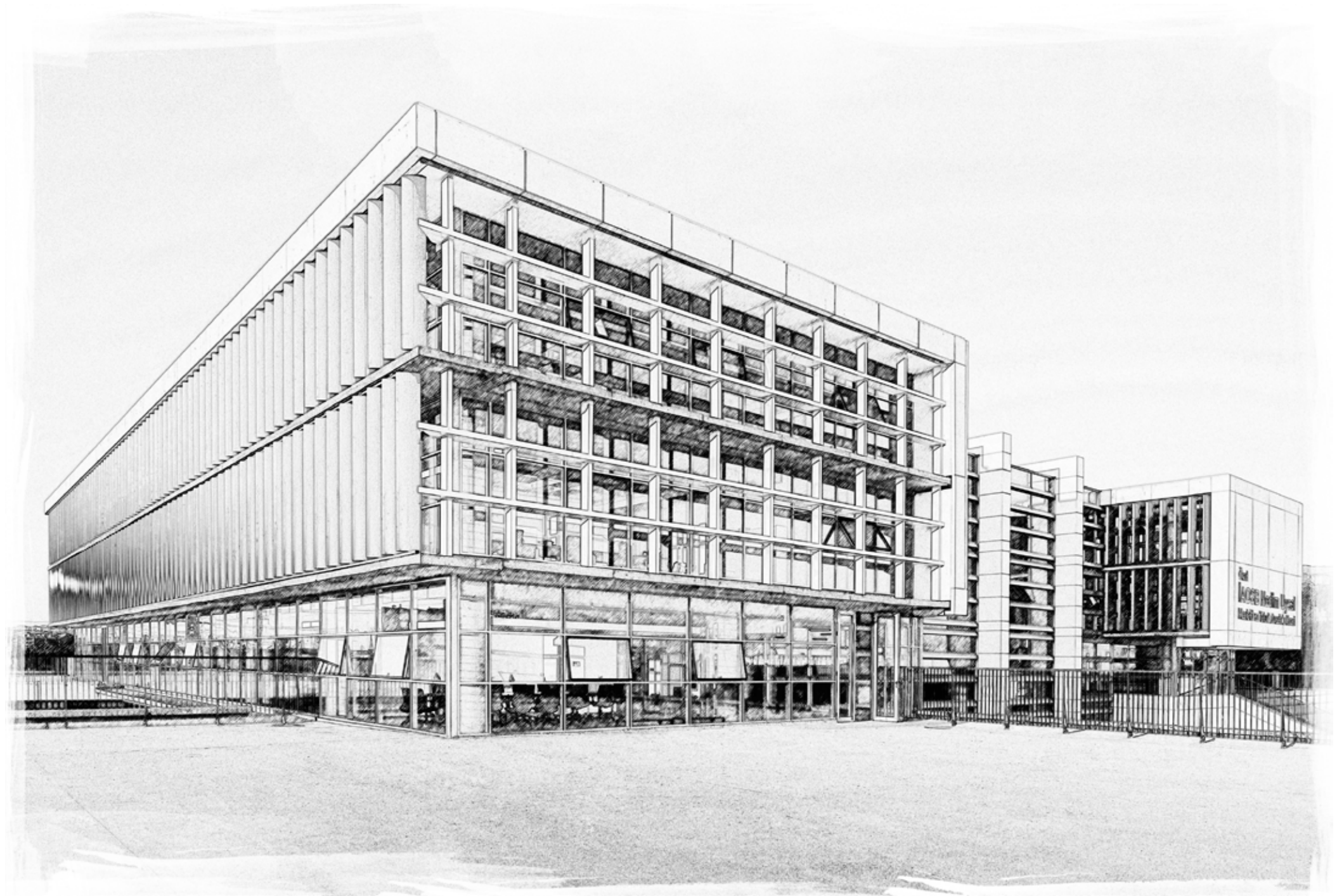






*Glass respects the situation it is in, highlights, and reflects what is next to it. It is at peace with its surroundings. It melts the boundaries, transforms exterior to interior-interior to exterior, and makes it free. It reproduces and enriches. It both exists and doesn't, it alleviates. It is elegant and delicate. In design, we care about spatial continuity, interior and exterior coexistence, space dynamics created by natural light, and glass is a material that can respect these expectations.*

IAOIZ NU Technical and Industrial Professional High School is located in an industrial zone which has an enclosed layout formed by closed-box building blocks/factories, and the main idea of the design approach aims to reflect its existence within the context by having contrasting building identity. Accordingly, the building was designed in a fiction that strengthens its relationship with the exterior while offering a dynamic interior life. Building mass is organized as fragmented blocks around a central gallery in the plan with large transparent surfaces, which provides a visual connection with the interior and enable maximum use of natural light. **Large transparent glass surfaces, that are located both at the interior and exterior façades, provide continuous spatial effect from inside to outside, while movements of natural light increase the dynamism of interior space. The southern façade that forms one surface of the gallery is desired to be transparent through the building height. Şişecam Temperable Solar Control Low-E Glass Neutral 62/44 has been selected as glass on the façade where horizontal panels are used for solar control. Tempered glass is used for ensuring safety on the transparent wall surfaces in interior.**





# ILBANK REGIONAL HEADQUARTERS

ISTANBUL

## FAÇADE GLASS

ŞİŞECAM  
TEMPERABLE  
SOLAR CONTROL  
LOW-E GLASS  
NEUTRAL 50/33

ŞİŞECAM  
TEMPERABLE  
SOLAR CONTROL  
LOW-E GLASS  
NEUTRAL 62/44

ARCHITECTURAL DESIGN  
**Öncüoğlu Architects**

INVESTOR  
**İlbank**

FAÇADE CONSULTANT  
**Axis Façade**

GLASS PROCESSOR  
**Yakut Cam**





# ELLIPSE CENTER

BULGARIA

## FAÇADE GLASS

ŞİŞECAM  
TEMPERABLE  
SOLAR CONTROL  
LOW-E GLASS  
NEUTRAL 58/32

ARCHITECTURAL DESIGN  
LP Consult  
INVESTOR  
Ilpa Development



# TURKUVAZ MEDIA CENTER

ISTANBUL

## FAÇADE GLASS

ŞİŞECAM  
TEMPERABLE  
SOLAR CONTROL  
LOW-E GLASS  
NEUTRAL 50/27

ARCHITECTURAL DESIGN  
**Arıma Architects**

INVESTOR  
**Turkuvaz Medya Grubu**

FAÇADE CONSULTANT  
**MRS Architecture & Consulting**

GLASS PROCESSOR  
**Yakut Cam**





# SAMSUN MULTIPURPOSE HALL

SAMSUN

FAÇADE GLASS

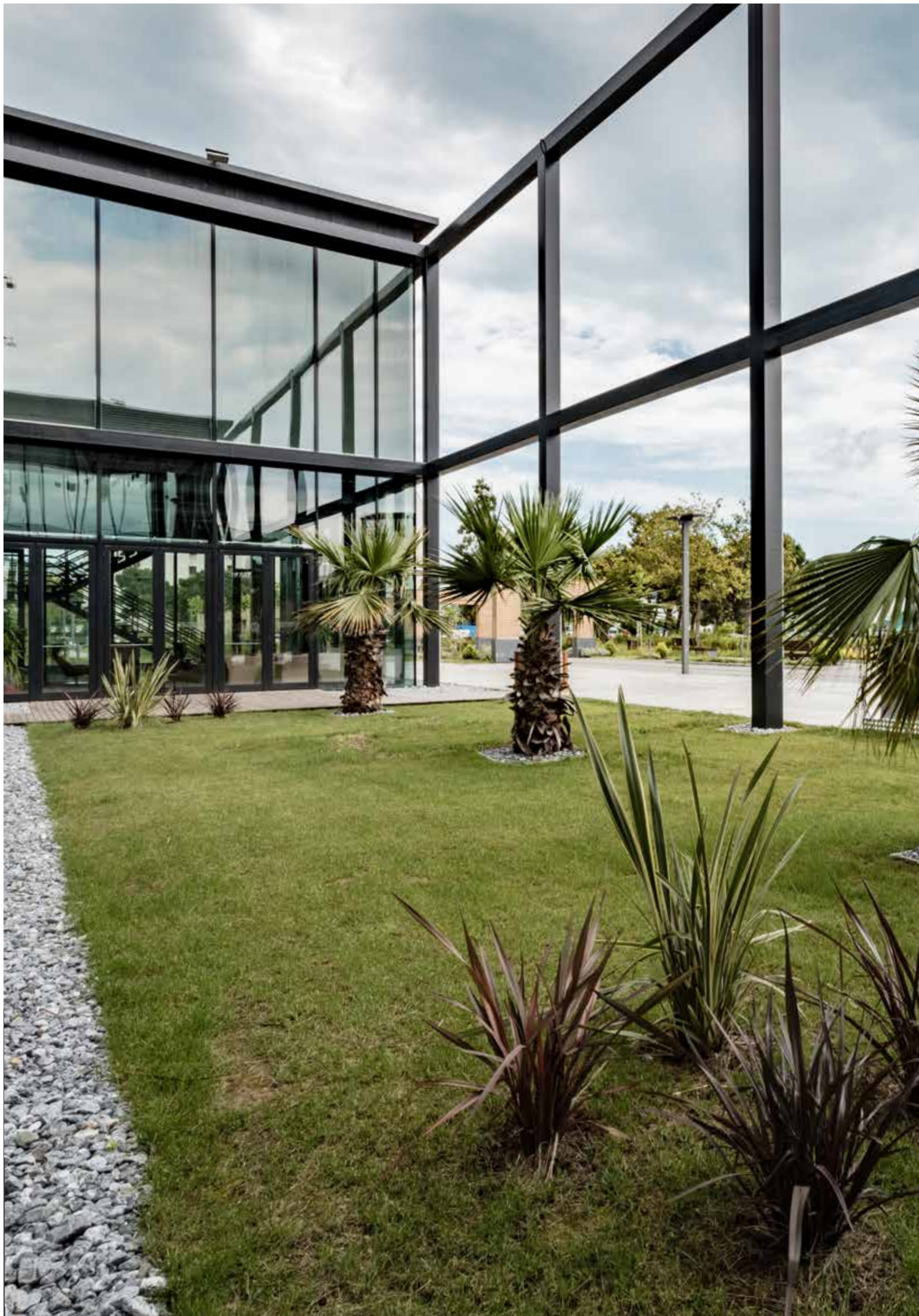
ŞİŞECAM  
TEMPERABLE  
LOW-E GLASS  
NEUTRAL 71/53

ARCHITECTURAL DESIGN  
CAA.Studio

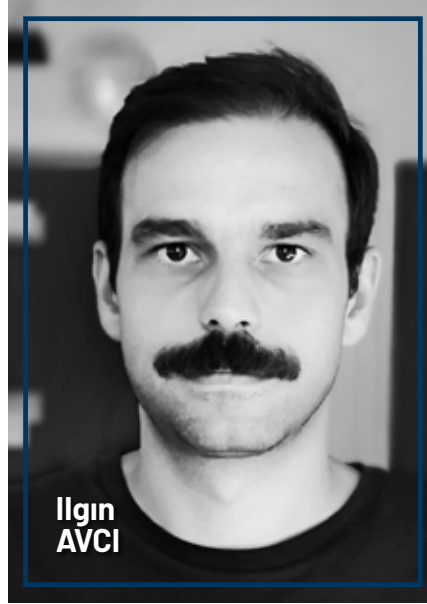
INVESTOR  
Samsun Municipality











Samsun "Multipurpose Hall" is built on the traces of the demolished Samsun Hotel's "Ballroom".

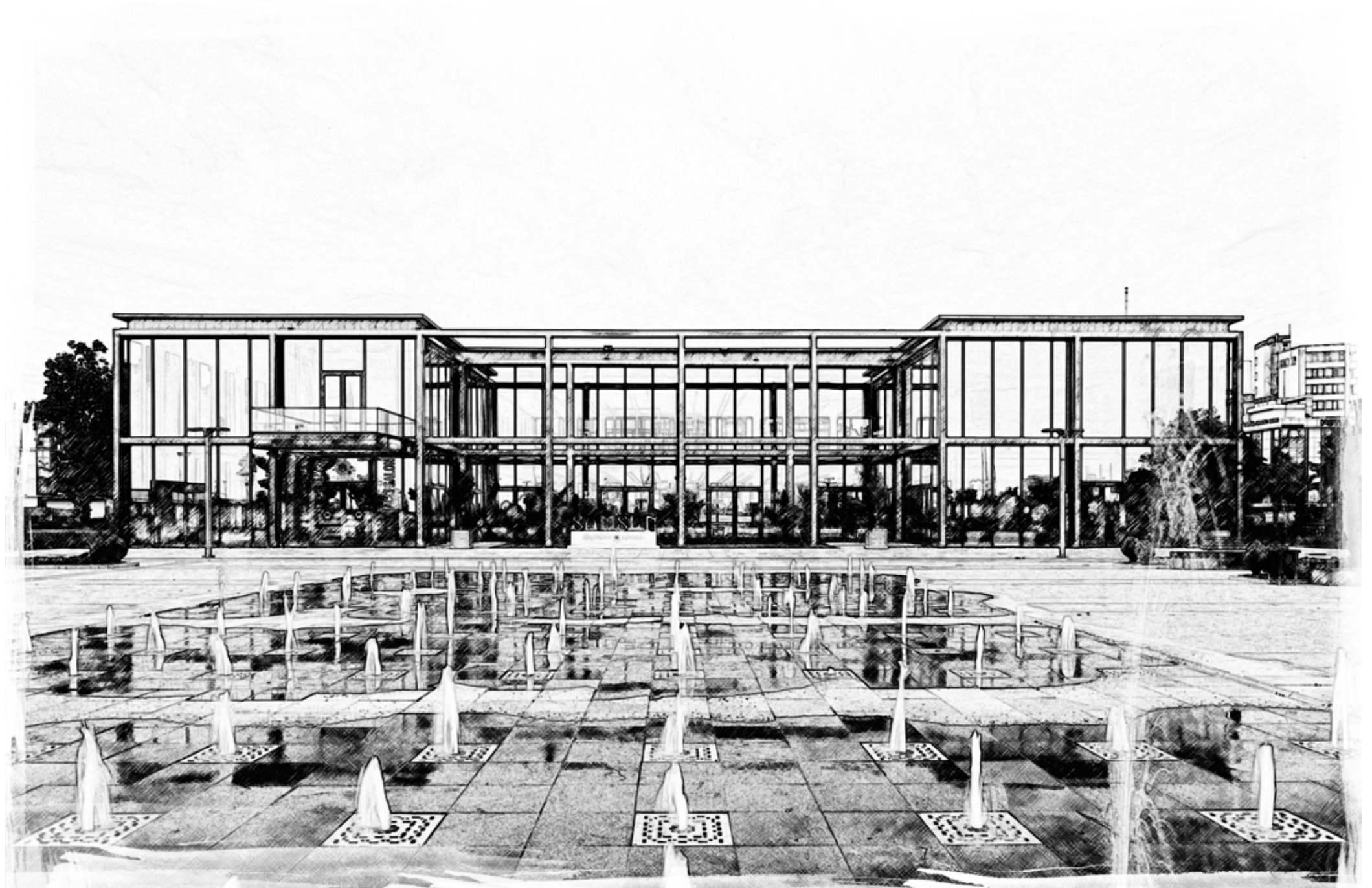
Old Samsun's "Ballroom" building had hosted lots of different events like wedding ceremonies which had taken a place in people's life. Preserving and maintaining its place in the urban memory is aimed at the project.

The Building is situated between Samsun Atatürk Cultural Center and "İlkadım" Monument in the city center. The green coastline, where the building is located, has some buildings which are hosting social and cultural events.

**Keeping a visual connection between coastline and city is realized by designing the main hall's façade, as transparent as possible parallel to the coastline with this transparency, the events can be perceived from the outside. To achieve this transparency, large-sized glass with low reflection has been used. The building's architectural expression is generally achieved by expressing the structural system.**

**The metal cage system, which surrounds the building, is becoming rare or frequent, according to the functions behind, by creating an irregular rhythm on the façades.**

There are two main halls of 600 square meters and two small meeting room areas in the building. A two-story height foyer space is welcoming guests with a sculptural staircase.





# KARAT 34 ISTANBUL

## FAÇADE GLASS

ŞİŞECAM  
TEMPERABLE  
SOLAR CONTROL  
LOW-E GLASS  
NEUTRAL 50/33

ARCHITECTURAL DESIGN  
**Tago Architects**

INVESTOR  
**Doğa Şehircilik & Başyapı Ortak Girişimi**

FAÇADE CONSULTANT  
**Arya Cephe Danışmanlık & Proje - ACDP**

GLASS PROCESSOR  
**Sar Cam**



# BUMERANG KARTAL

ISTANBUL

## FAÇADE GLASS

 **ŞİŞECAM**  
TEMPERABLE  
SOLAR CONTROL  
LOW-E GLASS  
DEEP BLUE 40/28

ARCHITECTURAL DESIGN  
**AE Mimarlık**

INVESTOR  
**Özkartallar Group**

FAÇADE CONSULTANT  
**Façade Design Factory**

GLASS PROCESSOR  
**Yıldız Cam**





# NEW CONFERENCE HALL OF NATIONAL ASSEMBLY

## SOFIA

BULGARIA

**SKYLIGHT**  
(Triple Insulating Glass Unit)

 **ŞİŞECAM  
TENTESOL**  
GREY

 **ŞİŞECAM  
TEMPERABLE  
LOW-E GLASS**  
NEUTRAL 71/53

 **ŞİŞECAM  
ACOUSTIC  
LAMINATED GLASS**

ARCHITECTURAL DESIGN  
**Niconsult**

INVESTOR  
**Republic of Bulgaria**





# ERSA SHOWROOM IDEAS HOUSE

ISTANBUL

## FAÇADE GLASS

ŞİŞECAM  
TEMPERABLE  
SOLAR CONTROL  
LOW-E GLASS  
NEUTRAL 62/44

ARCHITECTURAL DESIGN  
SANALarc

INVESTOR  
Ersa









SANALarc



Murat  
ŞANAL

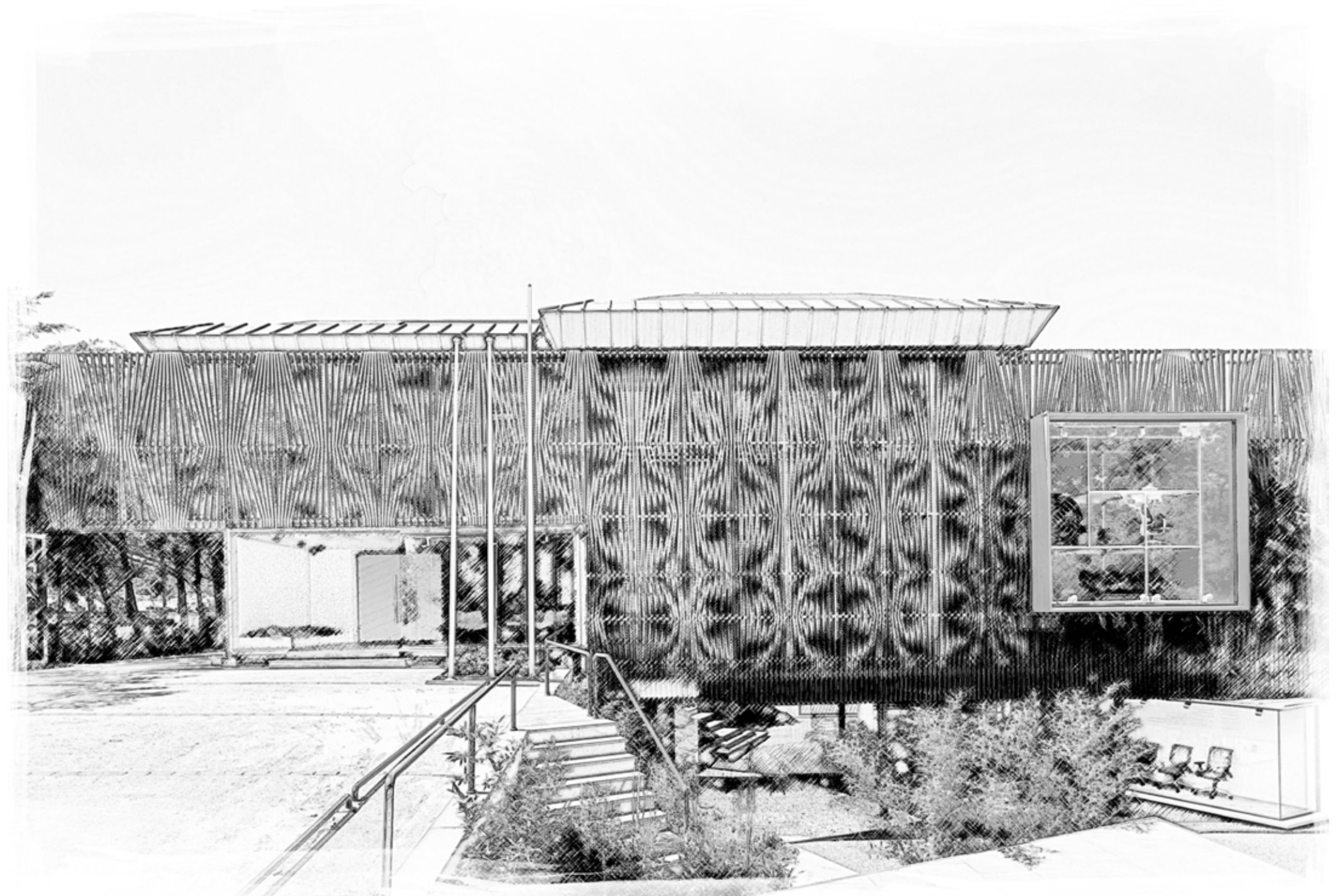
Alexis  
ŞANAL

SANALarc took on the project of converting the older building into a contemporary environment that would house the design brand of the 21st century. Three main interrelated compositional spatial responses came to shape the new architectural design: The Billboard, The Winter Garden, and The Sequence of Settings.

Putting forward ERSA's commitment to visual culture, the "Billboard," which is used as a window to display furniture products, also assumes the function of an outward-facing notice board for the BOX-IN-A-BOX platform, a proof of the brand's innovative identity. The moiré pattern developed specifically for ERSA and used on the Billboard was thought of as a kind of dynamic and visual background for the design brand which could resonate in all their subsidiary partner showrooms. **The display window embedded in the Billboard allows for a kind of public space that can be used for product presentations and/or seasonal events, not only by furniture designers but also by illustrators and craftspeople, and even musicians.**

Winter Garden provides a permeable and animated visible connection between the main showroom on the lower level and the office spaces on the upper level. **Two sculpted columns surrounded by a glass veil support the volume of the cube's roofing. The rear façade cladding of the inherited building was removed, allowing the upper building levels to perch into the volume and borrow natural light, city views, and connectivity for the showroom's daily life.**

While designing the sequence of settings, all office units were positioned such that the other spaces would be within their line of sight. **The result is an integral new building where natural light can be felt in all spaces, which preserves its relationship with greenery, and where one can spend time with serendipitous encounters in the company of peers and colleagues.**





# GENERAL DIRECTORATE OF STATE HYDRAULIC WORKS

ANKARA

## FAÇADE GLASS

ŞİŞECAM  
TEMPERABLE  
SOLAR CONTROL  
LOW-E GLASS  
NEUTRAL 50/27

ARCHITECTURAL DESIGN  
**Uz Architecture Atelier**

INVESTOR  
**The General Directorate of State Hydraulic Works**

FAÇADE CONSULTANT  
**MRS Architecture & Consulting**

GLASS PROCESSOR  
**Ardıç Cam**





# G BEYOND BODRUM

MUGLA

## FAÇADE GLASS

ŞİŞECAM  
TEMPERABLE  
SOLAR CONTROL  
LOW-E GLASS  
NEUTRAL 70/37

ARCHITECTURAL DESIGN  
**Paolo Rizzo Architect**

INVESTOR  
**Maryapı**

GLASS PROCESSOR  
**Aras Cam**





# DAKAR ARENA

SENEGAL

## FAÇADE GLASS

ŞİŞECAM  
TEMPERABLE  
SOLAR CONTROL  
LOW-E GLASS  
NEUTRAL 50/33

ARCHITECTURAL DESIGN  
Yazgan Design Architecture Inc.

INVESTOR  
Summa Inc. Co.

GLASS PROCESSOR  
Gürsan Cam



# ARDEN MEDICAL FACTORY

ANKARA

## FAÇADE GLASS

ŞİŞECAM  
TEMPERABLE  
SOLAR CONTROL  
LOW-E GLASS  
NEUTRAL 50/33

ARCHITECTURAL DESIGN  
**Ven Architecture**

INVESTOR  
**Arden Medikal**

GLASS PROCESSOR  
**Ardıç Cam**











Ven  
Architecture  
Gül  
GÜVEN

Arden Medikal is located in an industrial site, the complex involves landscape, reception area, and management on the south side; whereas service and production areas are located on the north. The basic units of the industry such as material production area, management area, social areas, service volumes, infrastructure, and hardware areas have been studied and their functional flow is solved primarily. On the lower ground floor of the factory, there are metal and wood workshops and logistics service areas, while on the upper ground floor, knitting and sewing workshops and quality control areas are located. The administrative office is on the first floor. The possibility of a second stage, that is, the possibility of development and growth is organized in the first stage.

**Despite its cubic simple form, the structure stands out as a benchmark in the industrial plant surrounding it.** In the design, the topography of the land at low elevation compared to the main road was interpreted as an advantage and not leveled at the front garden road elevation. **As a result, the upper ground floor was connected to the road by a bridge, and the lower ground floor could be opened to the garden on the south side as well as on the north. A biological pond has been constructed in the wide landscape area in front of the social corridor and the refectory, but the construction has not been completed yet.**

**In the design process, it has been considered important to create peaceful and bright areas that will increase motivation for those working in the industrial facility. In the workshops illuminated by daylight, the windows that catch the view of distant mountains reach their maximum size. As a result of the studies for the selection of façade glass of the project, it was decided to use Şişecam Temperable Solar Control Low-E Glass Neutral 50/33 & Şişecam Laminated Glass.**

The characteristic structure of the brick as an industrial product is dominant on the façade. Expanded mesh metal surfaces in bridges and terraces accompany brick. In the interior, ceilings and columns are left with bare concrete. Floors and stairs in common halls are in epoxy; in workshops, the surface is hardened lean concrete. In the high lobby, which is the first welcome area of the factory, the brick on the façade was used as a motif element in the interior.





# AND PASTEL

ISTANBUL

## FAÇADE GLASS

ŞİŞECAM  
TEMPERABLE  
SOLAR CONTROL  
LOW-E GLASS  
NEUTRAL 58/32

ARCHITECTURAL DESIGN

HPP International Turkey Mimarlık ve Danışmanlık Hizmetleri

INVESTOR

AEH Anadolu Gayrimenkul Yatırımları A.S.

GLASS PROCESSOR

Camyapı, Yakut Cam





# SAINT SOFIA HOSPITAL

BULGARIA

FAÇADE GLASS

ŞİŞECAM  
SOLAR CONTROL  
LOW-E GLASS

ARCHITECTURAL DESIGN  
**Ivo Petrow – Architects LTD**

INVESTOR  
**Building Hospitals**

GLASS PROCESSOR  
**Bulit**





# GLOBAL DREAM OFFICES

MERSIN

## FAÇADE GLASS

ŞİŞECAM  
TEMPERABLE  
SOLAR CONTROL  
LOW-E GLASS  
NEUTRAL 41/27

ARCHITECTURAL DESIGN

**Yüce Architects**

INVESTOR

**Ekinci İnşaat**

GLASS PROCESSOR

**Adana Cam**





# MIDDLE EAST TECHNICAL UNIVERSITY (METU) TEKNOKENT INNOVATION CENTER

ANKARA **ODTÜ·TEKNOKENT**  
BİLİŞİM İNOVASYON MERKEZİ

## FAÇADE GLASS

ŞİŞECAM  
TEMPERABLE  
LOW-E GLASS  
NEUTRAL 71/53

ARCHITECTURAL DESIGN  
**FREA**

INVESTOR  
**Middle East Technical University (METU) Teknokent**

FAÇADE CONSULTANT  
**Baymim Cephe Danışmanlık**

GLASS PROCESSOR  
**Karataş Cam**











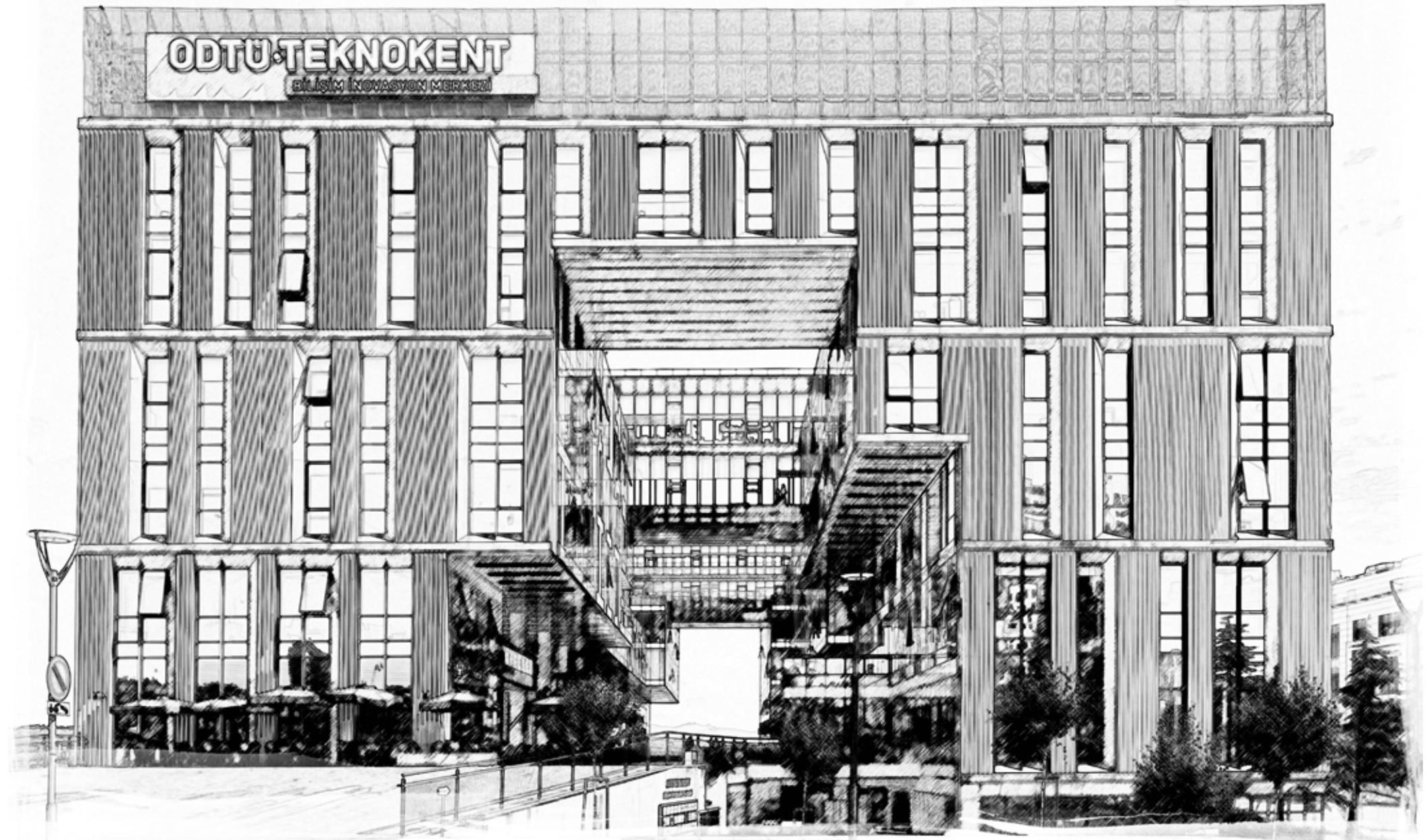
FREA  
Fatih  
YAVUZ



Emre  
ŞAVURAL

In the architectural design process, the material is often at the center of the most important discussions in the flesh tides of imagining ideas. **Glass, which is one of the main elements of building structures throughout history, has the ability to redefine the place and design. It is possible to see the leading role of glass in the most unique designs of architectural history. The ability to destroy the borders while creating a boundary where it is located gives the glass a unique quality and makes it one of the most indispensable elements of architectural designs. Glass, whose performance has increased in parallel with the advances in technology in recent years, offers much wider solutions to designers.** We now have the chance to choose highly specific products according to the climate, orientation of the place where the building is located and the very specific functional requirements of the places it is associated with. In this way, it is possible to provide comfort conditions at much better levels without weakening the power of the design.

**Glass in METU Technopolis SCIENCE structure is one of the primary structural elements that we apply both transparent and opaque. 'Glass' was the indispensable building material of the design and construction process in finding the identity of the structural walls created in this structure where the alley, which constitutes the spatial backbone of the METU campus, is reproduced. The opaque colored glass in the modulation that we recommend on Alley walls reflect the colors of the METU identity while at the same time aiming to maintain the level of privacy for the spaces behind the two facing façades.** The fact that the long sides of the building, where software companies are located, looking in the east and west directions were very important for the comfort levels of the workplaces. It was aimed to keep transparency and comfort together by choosing the glass suitable for the directions facing the building's façades.





# KUZU KUMRU

ANKARA

## FAÇADE GLASS

ŞİŞECAM  
TEMPERABLE  
SOLAR CONTROL  
LOW-E GLASS  
NEUTRAL 50/33

ARCHITECTURAL DESIGN  
**A Architectural Design**

INVESTOR  
**Kuzu Group**

GLASS PROCESSOR  
**Ardıç Cam**





# YOZGAT AQUAPARK

YOZGAT

## FAÇADE GLASS & SKYLIGHT

ŞİŞECAM  
TENTESOL  
SILVER

ŞİŞECAM  
LAMINATED GLASS  
GREEN

ŞİŞECAM  
LAMINATED GLASS  
BLUE

ARCHITECTURAL DESIGN  
ACE Mimarlık

INVESTOR  
Yozgat Special Provincial Administration





# 275 FOURTH AVENUE

NEW YORK - USA

## FAÇADE GLASS

ŞİŞECAM  
TEMPERABLE  
SOLAR CONTROL  
LOW-E GLASS  
NEUTRAL 50/33

ARCHITECTURAL DESIGN  
Issac & Stern Architects,  
Oda Architecture

INVESTOR  
NETT Project LLC

FAÇADE CONSULTANT  
Buro Happold

GLASS PROCESSOR  
Camyapi





# ÇANKAYA UNIVERSITY CENTER FOR CONGRESS & CULTURE, SPORTS CENTER

ANKARA

FAÇADE GLASS

ŞİŞECAM  
LOW-E GLASS

ŞİŞECAM  
TINTED FLOAT GLASS  
GREEN

ŞİŞECAM  
TINTED FLOAT GLASS  
GREY

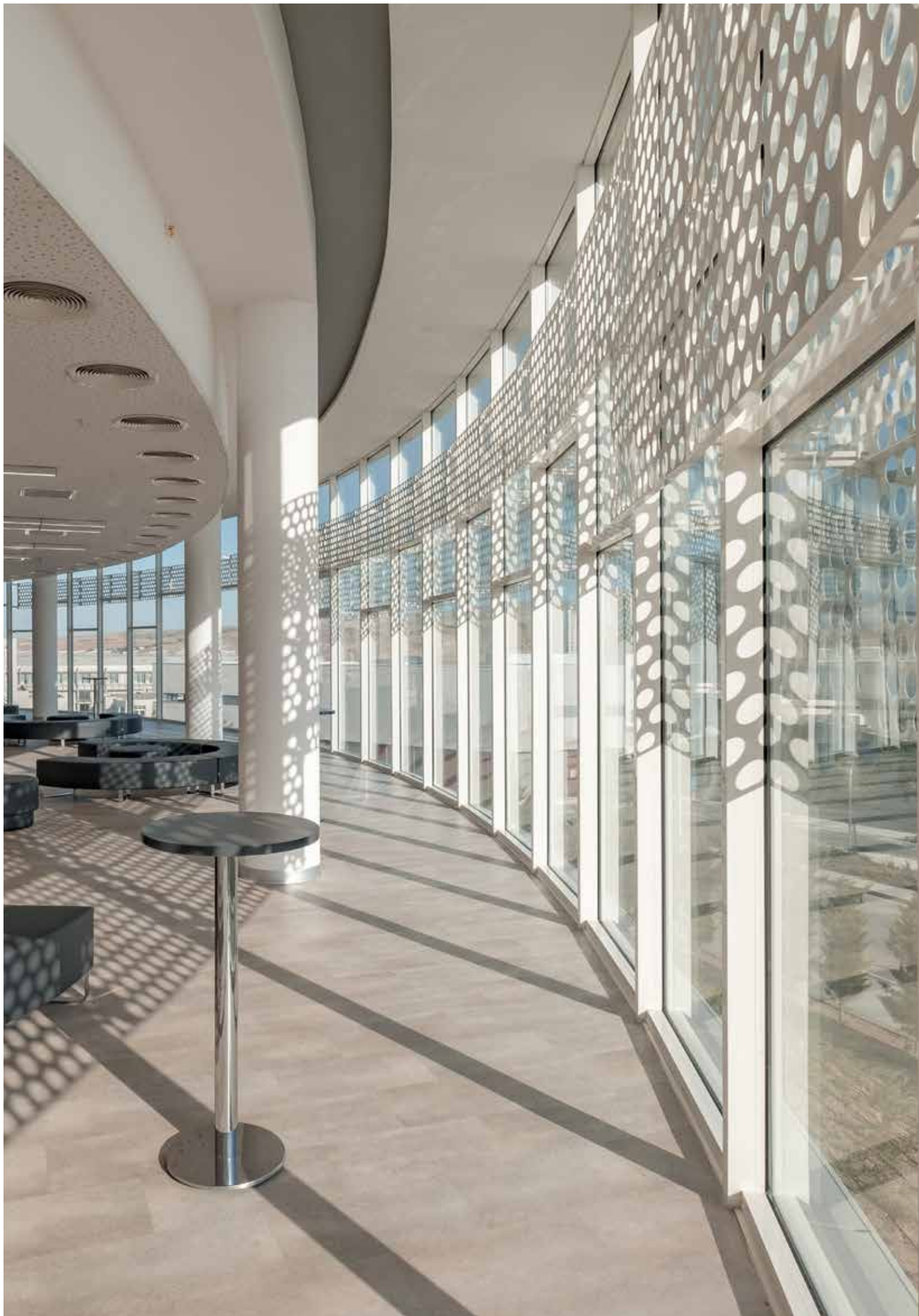
ARCHITECTURAL DESIGN  
**Erkal Architects**

INVESTOR  
**Çankaya University**

GLASS PROCESSOR  
**Karataş Cam**











The variety of spaces a university campus incorporates asks for a series of natural and artificial lighting conditions in tight proximity, with varying qualities and expectations. To illustrate, a laboratory for undertaking precise experiments and a festive cafeteria for students might coexist on the same façade of the same building. **Consequently, the specified façade elements might exhibit contradicting qualities. The need to organize these elements highlights the process of glass specification as a primary given in the shaping of the architectural character of buildings.**

Every building within Çankaya University Campus was sought to have a distinct character of its own, in addition to reflecting the campus identity. This search specifically led to a dual design for the façades of the faculty buildings. Each faculty building was shaped as part of the same network of buildings as being integrated within the same system. Yet they had to reflect the varieties of spatial qualities within. The façades were devised with a defining frame with a regular repetitive structure, inside which inner elements reflected responses to structural spans and extrusions yielding to the uses the volumes they enveloped. **Furthermore, separate color palettes were developed for separate buildings. One of the foremost components of the palette was the color distribution of architectural glass.**

Tinted float glass was specified for social spaces, foyers, and transition spaces, while educational and administrative spaces and offices were specified to have clear glass. As a result of orientation along the east-west axis, linear campus buildings enjoyed north and south solar exposure which generated a balanced natural lighting condition. **The buildings with surfaces facing the western or eastern sun tinted float glass products with solar and heat control were specified. These glass products provided the primary given for the color palettes of buildings such as The Library and the Congress and Cultural Center. The Congress and Cultural Center building was especially shaped within a round façade that followed the sun over the course of the day and painted its foyer with an interplay of light.**





# NOVUS VENTUS TOWERS

IZMIR

## FAÇADE GLASS

ŞİŞECAM  
TEMPERABLE  
SOLAR CONTROL  
LOW-E GLASS  
NEUTRAL 50/33

ARCHITECTURAL DESIGN  
**Yağcıoğlu Architecture**

INVESTOR  
**Adnan Kılıçoğlu & Katal İnşaat Ortaklığı**

FAÇADE CONSULTANT  
**Bağlan Mimarlık**

GLASS PROCESSOR  
**Era Cam**





# KEMER LIFE XXIII

ISTANBUL

## FAÇADE GLASS

ŞİŞECAM  
TEMPERABLE  
LOW-E GLASS  
NEUTRAL 71/53

ARCHITECTURAL DESIGN  
KPM Kerem Piker Mimarlık

INVESTOR  
Metal Yapı Konut

FAÇADE CONSULTANT  
Tosca Façade

GLASS PROCESSOR  
Yıldz Cam





# ST. GEORGE INTERNATIONAL SCHOOL & PRESCHOOL

BULGARIA

FAÇADE GLASS

ŞİŞECAM  
SOLAR CONTROL  
LOW-E GLASS

ARCHITECTURAL DESIGN  
**Elite Project Group**

INVESTOR  
**OSK Lozenets Jsc**

GLASS PROCESSOR  
**Capital Glass**

ST. GEORGE INTERNATIONAL SCHOOL & PRESCHOOL





# OZU DORM 6 ISTANBUL

## FAÇADE GLASS

ŞİŞECAM  
TEMPERABLE  
SOLAR CONTROL  
LOW-E GLASS  
NEUTRAL 50/33

ARCHITECTURAL DESIGN  
Hatırlı Architecture LLC

INVESTOR  
Özyeğin University

GLASS PROCESSOR  
Anadolu Cam





# ÇITLIK HOUSE

MUGLA

## FAÇADE GLASS

ŞİŞECAM  
SOLAR CONTROL  
LOW-E GLASS

ARCHITECTURAL DESIGN  
PIN Project International Architecture





# TAŞKESİK HOUSE

MUGLA

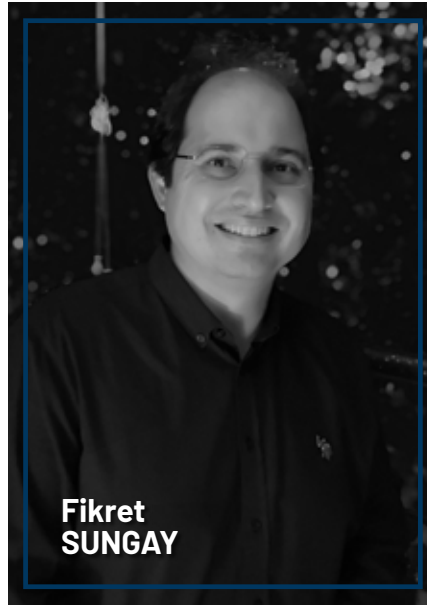
## FAÇADE GLASS

ŞİŞECAM  
TEMPERABLE  
SOLAR CONTROL  
LOW-E GLASS  
NEUTRAL 62/44

ARCHITECTURAL DESIGN  
PIN Project International Architecture

GLASS PROCESSOR  
Çıraylar Cam





**For their houses on the southern west coast of Turkey PIN chose an architectural strategy focusing on basic forms in concrete, steel, and glass integrated into the landscape.** Working with local builders who previously had no experience in the disciplined architectonic and structural design that PIN had implemented in their previous projects meant the architects had to align the construction to local capabilities but still ground the building in a contemporary approach demanded by the clients.

**The architecture of the buildings balances space and light with the natural texture of the landscape highlighting the presence of nature as the central focus of the design. The buildings with their large outdoor terrace open up visually and physically to the Aegean hills framing the surroundings. This is mostly done by large glass windows, which are high UV resistant, low reflective, and well insulated.**





# SAMSUN GOLF CLUB

SAMSUN

FAÇADE GLASS

ŞİŞECAM  
TEMPERABLE  
LOW-E GLASS  
NEUTRAL 71/53

ARCHITECTURAL DESIGN  
**CAA.Studio**

INVESTOR  
**Samsun Municipality**

GLASS PROCESSOR  
**Resman Cam**





# BEYLIKDÜZÜ ARTS & CULTURAL CENTER (RENOVATION)

İSTANBUL

## FAÇADE GLASS

ŞİŞECAM  
TEMPERABLE  
SOLAR CONTROL  
LOW-E GLASS  
NEUTRAL 50/33

## SKYLIGHT

ŞİŞECAM  
TEMPERABLE  
SOLAR CONTROL  
LOW-E GLASS  
NEUTRAL 41/27

ARCHITECTURAL DESIGN  
**S0? Architecture & Ideas**

INVESTOR  
**Beylikduzu Municipality**

GLASS PROCESSOR  
**Alcam**





# KITE BUILDING

BULGARIA

## THE OUTER FAÇADE GLASS

 **ŞİŞECAM**  
TINTED FLOAT GLASS  
BLUE

ARCHITECTURAL DESIGN

**Amphion**

INVESTOR

**T.I.M. - H**

GLASS PROCESSOR

**Kristian Neiko**





# 1071 ANKARA

ANKARA

## FAÇADE GLASS

ŞİŞECAM  
TEMPERABLE  
SOLAR CONTROL  
LOW-E GLASS  
NEUTRAL 50/33

ARCHITECTURAL DESIGN  
**A Architectural Design**

INVESTOR  
**Oguzata İnşaat (İbrahim Usta İnşaat)**

FAÇADE CONSULTANT  
**Baymim Cephe Danışmanlık**

GLASS PROCESSOR  
**Sar Cam**





# THE MERCER

IZMIR

## FAÇADE GLASS

ŞİŞECAM  
TEMPERABLE  
LOW-E GLASS  
NEUTRAL 71/53

ŞİŞECAM  
ULTRA CLEAR  
LAMINATED GLASS

ARCHITECTURAL DESIGN  
**Elmacı Architects Mennan ELMACI**

INVESTOR  
**Vela Construction**

GLASS PROCESSOR  
**Era Cam**

THE MERCER





# ALIFUAT CEBESOY ANATOLIAN HIGH SCHOOL ISTANBUL

## FAÇADE GLASS

ŞİŞECAM  
TEMPERABLE  
SOLAR CONTROL  
LOW-E GLASS  
NEUTRAL 70/37

ARCHITECTURAL DESIGN  
**Uygun Architects**

INVESTOR  
**Istanbul Project Coordination Unit**

GLASS PROCESSOR  
**Trakya Group Glass**





# SMK TOWER

ANKARA

## FAÇADE GLASS

ŞİŞECAM  
TEMPERABLE  
SOLAR CONTROL  
LOW-E GLASS  
NEUTRAL 50/33

ARCHITECTURAL DESIGN  
**Yöntem Mimarlık**

INVESTOR  
**SMK Group**

GLASS PROCESSOR  
**Karataş Cam**





# FLORA PARK

BULGARIA

## FAÇADE GLASS

ŞİŞECAM  
SOLAR CONTROL  
LOW-E GLASS

ARCHITECTURAL DESIGN  
**Sharenkov Architects**

INVESTOR  
**Tria Invest**

GLASS PROCESSOR  
**Kedi Commerce**





# BAŞKENT EMLAK KONUTLARI

ANKARA

## FAÇADE GLASS

ŞİŞECAM  
TEMPERABLE  
SOLAR CONTROL  
LOW-E GLASS  
NEUTRAL 70/37

ARCHITECTURAL DESIGN  
**Sabri Paşayığıt Architects**

INVESTOR  
**Emlak Konut GYO**

FAÇADE CONSULTANT  
**Baymim Cephe Danışmanlık & Bağlan Mimarlık**

GLASS PROCESSOR  
**Camplaza**





# IT VALLEY

ISTANBUL

## FAÇADE GLASS

ŞİŞECAM  
TEMPERABLE  
SOLAR CONTROL  
LOW-E GLASS  
NEUTRAL 50/33

ARCHITECTURAL DESIGN  
Bütüner Architects

INVESTOR  
Muallimköy Teknoloji Geliştirme Bölgesi Yönetici A.Ş.

GLASS PROCESSOR  
Camyapı, Sar Cam

BİLİŞİM VADİSİ





# DESIGN HOTEL

IRAQ

## FAÇADE GLASS

ŞİŞECAM  
TEMPERABLE  
SOLAR CONTROL  
LOW-E GLASS  
NEUTRAL 62/44

INVESTOR  
**Sarbakho Company - Msu İnşaat**

GLASS PROCESSOR  
**Temka Glass**





# THE SMILE ACADEMY DENTAL POLYCLINIC

GAZIANTEP

## INTERIOR

ŞİŞECAM  
OPAQUE  
LAMINATED GLASS

ŞİŞECAM  
CLEAR FLOAT GLASS

ARCHITECTURAL DESIGN  
**Slash Architects**

GLASS PROCESSOR  
**Başaran Cam**





# ELMAR TOWERS

ANKARA

## FAÇADE GLASS

ŞİŞECAM  
TEMPERABLE  
SOLAR CONTROL  
LOW-E GLASS  
NEUTRAL 50/33

ARCHITECTURAL DESIGN

**Gökhan Aksoy Architects**

INVESTOR

**Elmar Yapı**

FAÇADE CONSULTANT

**Baymim Cephe Danışmanlık**

GLASS PROCESSOR

**Gürsan Cam**





# ODELO FARBA FACTORY

BULGARIA

## FAÇADE GLASS

||| ŞİŞECAM  
TEMPERABLE  
SOLAR CONTROL  
LOW-E GLASS  
NEUTRAL 58/32



ARCHITECTURAL DESIGN  
**ADS**

INVESTOR  
**Odelo Farba Bulgaria**

GLASS PROCESSOR  
**Glassco**







# ISTANBUL MUSEUM OF PAINTING & SCULPTURE ISTANBUL

ARCHITECTURAL DESIGN  
EAA - Emre Arolat Architecture

INVESTOR  
Mimar Sinan Fine Arts University (MSGSU)

FAÇADE CONSULTANT  
Axis Façade

GLASS PROCESSOR  
Yıldız Cam

ŞİŞECAM  
TEMPERABLE  
LOW-E GLASS  
NEUTRAL 71/53

ŞİŞECAM  
ULTRA CLEAR  
LAMINATED GLASS



# ALLEGRO REHABILITATION CENTER BULGARIA

ARCHITECTURAL DESIGN  
A&A Architects

GLASS PROCESSOR  
Kristian Neiko

ŞİŞECAM  
SOLAR CONTROL  
LOW-E GLASS



# ERCIYAS HOLDING HEADQUARTERS ISTANBUL

ARCHITECTURAL DESIGN  
KG Mimarlık

INVESTOR  
Erciyas Holding

ŞİŞECAM  
TEMPERABLE  
LACQUERED GLASS  
BLACK

ŞİŞECAM  
LAMINATED GLASS



# MATLI PLAZA BURSA

ARCHITECTURAL DESIGN  
Sözüneri Architects

INVESTOR  
Matlı Holding

GLASS PROCESSOR  
Ardıç Cam

ŞİŞECAM  
TEMPERABLE  
SOLAR CONTROL  
LOW-E GLASS  
NEUTRAL 62/44



# BODRUM DEMİRBÜKÜ HOUSES CLUB HOUSE MUĞLA

ARCHITECTURAL DESIGN  
Erginoğlu & Çalışlar Architects

INVESTOR  
Mesa Mesken

GLASS PROCESSOR  
Antcam

ŞİŞECAM  
TEMPERABLE  
SOLAR CONTROL  
LOW-E GLASS  
NEUTRAL 62/44



# TROY MUSEUM ÇANAKKALE

ARCHITECTURAL DESIGN  
Yalın Mimarlık

INVESTOR  
Turkish Ministry of Culture and Tourism

ŞİŞECAM  
LOW-E GLASS





# FOLKART ARDIÇ IZMIR

ARCHITECTURAL DESIGN  
**Dilekci Architects (DDA)**

INVESTOR  
**Folkart**

FAÇADE CONSULTANT  
**Bağlan Mimarlık**

GLASS PROCESSOR  
**Aras Cam**

ŞİŞECAM  
TEMPERABLE  
SOLAR CONTROL  
LOW-E GLASS  
NEUTRAL 62/44



# BAYRAMPAŞA VOCATIONAL & TECHNICAL ANATOLIAN HIGH SCHOOL ISTANBUL

ARCHITECTURAL DESIGN  
**Uygun Architects**

INVESTOR  
**Istanbul Project Coordination Unit**

GLASS PROCESSOR  
**Trakya Group Glass**

ŞİŞECAM  
TEMPERABLE  
SOLAR CONTROL  
LOW-E GLASS  
NEUTRAL 70/37



# KUZU EFFECT ANKARA

ARCHITECTURAL DESIGN  
**EAA - Emre Arolat Architecture**

INVESTOR  
**Kuzu Group**

FAÇADE CONSULTANT  
**Axis Façade**

GLASS PROCESSOR  
**Ardıç Cam**

ŞİŞECAM  
TEMPERABLE  
LOW-E GLASS  
NEUTRAL 70/37  
\*This product is renewed



# RIU PALACE BULGARIA

ARCHITECTURAL DESIGN  
**Vamos**

INVESTOR  
**Tera Tour Service**

GLASS PROCESSOR  
**Preciz AI**

ŞİŞECAM  
TEMPERABLE  
SOLAR CONTROL  
LOW-E GLASS  
NEUTRAL 50/33

ŞİŞECAM  
TEMPERABLE  
LOW-E GLASS  
GREEN 59/36





# IZMIR CHAMBER OF COMMERCE NEW SERVICE BUILDING IZMIR

ARCHITECTURAL DESIGN  
**Ayyapı Mimari**  
INVESTOR  
**Izmir Chamber of Commerce**  
GLASS PROCESSOR  
**Aras Cam**

ŞİSECAM  
TEMPERABLE  
SOLAR CONTROL  
LOW-E GLASS  
NEUTRAL 50/33

ŞİSECAM  
TENTESOL  
SILVER

ŞİSECAM  
TENTESOL  
BRONZE

ŞİSECAM  
TEMPERABLE  
LOW-E GLASS  
NEUTRAL 71/53



# VADİSTANBUL PARK İSTANBUL

ARCHITECTURAL DESIGN  
**Iki Design Group**  
INVESTOR  
**Artaş Group**  
FAÇADE CONSULTANT  
**Erdal Darcan**  
GLASS PROCESSOR  
**Camyapı, Temka Glass**

ŞİSECAM  
TEMPERABLE  
SOLAR CONTROL  
LOW-E GLASS  
NEUTRAL 70/37

ŞİSECAM  
TEMPERABLE  
SOLAR CONTROL  
LOW-E GLASS  
GREEN 51/30



# WYNDHAM HOTEL BATUMI GEORGIA

ARCHITECTURAL DESIGN  
**Paata Jgarkava, Iuri Putschinsky**  
INVESTOR  
**Metro Turizm**  
GLASS PROCESSOR  
**Resman Cam**

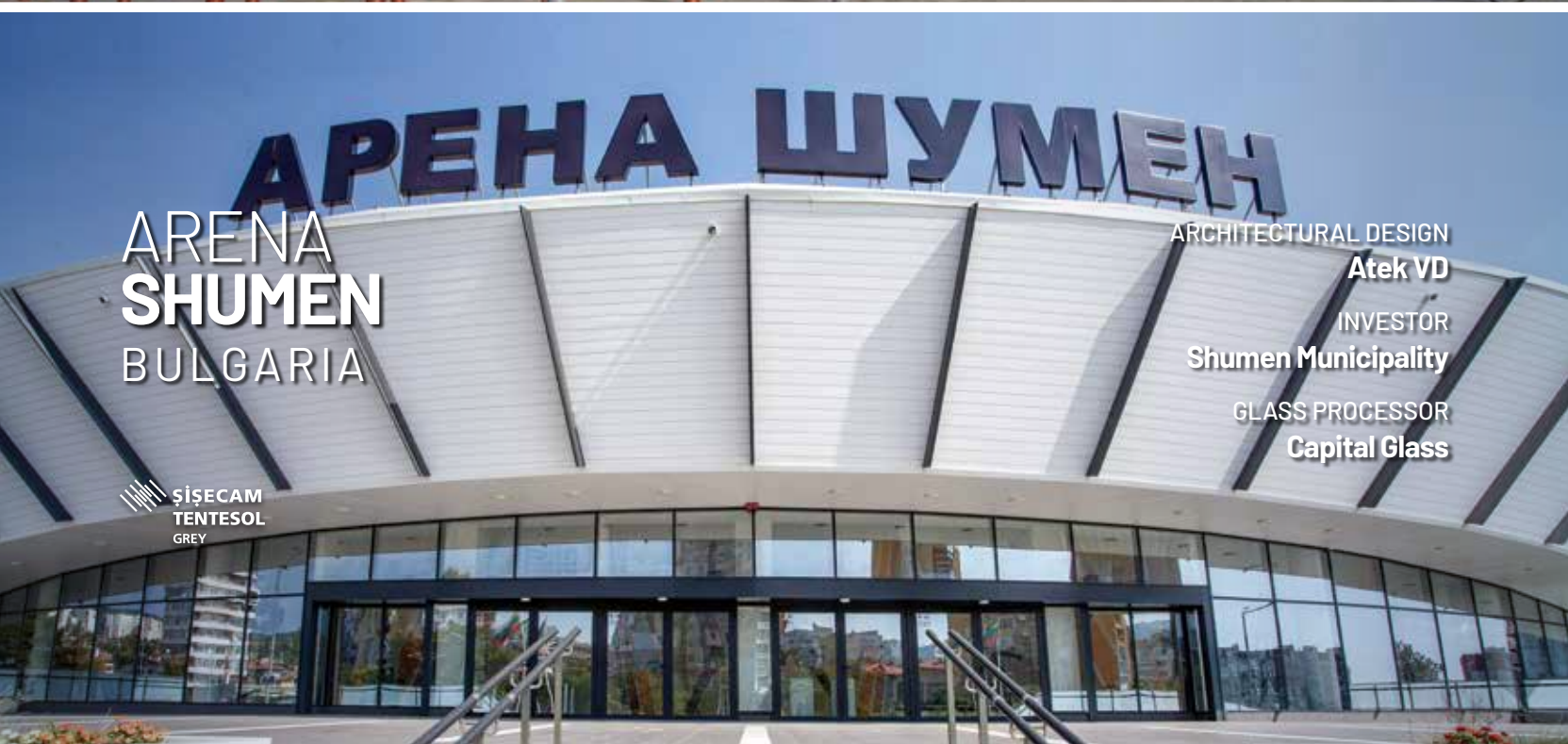
ŞİSECAM  
TENTESOL  
GREY



# ARENA SHUMEN BULGARIA

ARCHITECTURAL DESIGN  
**Atek VD**  
INVESTOR  
**Shumen Municipality**  
GLASS PROCESSOR  
**Capital Glass**

ŞİSECAM  
TENTESOL  
GREY





# NURSANLAR KARTAL ISTANBUL

ARCHITECTURAL DESIGN  
Sözüneri Mimarlık

INVESTOR  
Nursanlar İnşaat

FAÇADE CONSULTANT  
Façade Design Factory

GLASS PROCESSOR  
Çıraylar Cam

ŞİŞECAM  
TEMPERABLE  
SOLAR CONTROL  
LOW-E GLASS  
NEUTRAL 50/27

# GREEN TOWER BOLIVIA

ARCHITECTURAL DESIGN  
Ima Architects

INVESTOR  
Green Tower SRL

GLASS PROCESSOR  
Tvitec Glass

ŞİŞECAM  
TENTESOL  
GREEN

# QUEEN BOMONTI ISTANBUL

ARCHITECTURAL DESIGN  
Tago Architects

INVESTOR  
Sinpaş

FAÇADE CONSULTANT  
Axis Façade

GLASS PROCESSOR  
Antcam

ŞİŞECAM  
TEMPERABLE  
SOLAR CONTROL  
LOW-E GLASS  
NEUTRAL 50/33

# ESENYURT RIFAT ILGAZ MIDDLE SCHOOL ISTANBUL

ARCHITECTURAL DESIGN  
Uygur Architects

INVESTOR  
Istanbul Project Coordination Unit

GLASS PROCESSOR  
Trakya Group Glass

ŞİŞECAM  
TEMPERABLE  
SOLAR CONTROL  
LOW-E GLASS  
NEUTRAL 70/37



# YDA SÖĞÜTÖZÜ RESIDENCES & OFFICES ANKARA

ARCHITECTURAL DESIGN  
**Korucuoğlu Architecture**

INVESTOR  
**YDA Group  
& Bortor Construction**

FAÇADE CONSULTANT  
**Axis Façade**

GLASS PROCESSOR  
**Ardıç Cam**

ŞİŞECAM  
TEMPERABLE  
SOLAR CONTROL  
LOW-E GLASS  
NEUTRAL 62/44  
(Residential  
Block)

ŞİŞECAM  
TEMPERABLE  
SOLAR CONTROL  
LOW-E GLASS  
NEUTRAL 58/32  
(Office  
Block)

# GÖL PANORAMA HOUSES İSTANBUL

ARCHITECTURAL DESIGN  
**Tago Architects**

INVESTOR  
**Be-Ma Construction**

FAÇADE CONSULTANT  
**LG Design**

GLASS PROCESSOR  
**Trakya Group Glass**

ŞİŞECAM  
TEMPERABLE  
SOLAR CONTROL  
LOW-E GLASS  
NEUTRAL 50/33

ŞİŞECAM  
ACOUSTIC  
LAMINATED GLASS

# AKFEN BULVAR LOFT ANKARA

ARCHITECTURAL DESIGN  
**A Architectural Design**

INVESTOR  
**Akfen Construction**

FAÇADE CONSULTANT  
**Priedemann Facade Experts**

GLASS PROCESSOR  
**Yıldız Cam**

ŞİŞECAM  
TEMPERABLE  
SOLAR CONTROL  
LOW-E GLASS  
NEUTRAL 62/44

# PALAH CENTER BULGARIA

INVESTOR  
**Patstroy Jsc**

GLASS PROCESSOR  
**Capital Glass**

ŞİŞECAM  
TENTESOL SILVER





# İZMİR FOÇA BIOGAS FACILITY & ADMINISTRATION

ARCHITECTURAL DESIGN  
PIN Project International Architecture  
INVESTOR  
Energrom Enerji

ŞİŞECAM  
TEMPERABLE  
SOLAR CONTROL  
LOW-E GLASS  
NEUTRAL 62/44



# MOMENT KARTAL İSTANBUL

ARCHITECTURAL DESIGN  
3D Atölye Mimarlık  
INVESTOR  
AC Yapı  
GLASS PROCESSOR  
Dost Cam

ŞİŞECAM  
TEMPERABLE  
SOLAR CONTROL  
LOW-E GLASS  
NEUTRAL 50/33



# İSTANBUL 216 İSTANBUL

ARCHITECTURAL DESIGN  
DCD Mimarlık Deniz Çağlar Duman  
INVESTOR  
Baysaş İnşaat  
GLASS PROCESSOR  
Camyapı

ŞİŞECAM  
TEMPERABLE  
SOLAR CONTROL  
LOW-E GLASS  
NEUTRAL 50/33



# ATA CORNER LÜLEBURGAZ KIRKLARELİ

ARCHITECTURAL DESIGN  
Plug  
INVESTOR  
Ata GYO  
FAÇADE CONSULTANT  
FMT Facade Consultants  
GLASS PROCESSOR  
Yıldız Cam

ŞİŞECAM  
TEMPERABLE  
SOLAR CONTROL  
LOW-E GLASS  
NEUTRAL 50/33

ŞİŞECAM  
TEMPERABLE  
SOLAR CONTROL  
LOW-E GLASS  
NEUTRAL 71/53



# EKMAŞ MAVİŞEHİR İZMİR

ŞİSECAM  
TEMPERABLE  
SOLAR CONTROL  
LOW-E GLASS  
NEUTRAL 50/33

ARCHITECTURAL DESIGN  
Demirce Norms at Architecture

INVESTOR  
Ekmas Group

FAÇADE CONSULTANT  
Bağlan Mimarlık

GLASS PROCESSOR  
Aras Cam

# BAŞAKŞEHİR ÇAM & SAKURA CITY HOSPITAL İSTANBUL

ŞİSECAM  
TEMPERABLE  
SOLAR CONTROL  
LOW-E GLASS  
NEUTRAL 50/33  
(Façade)

ŞİSECAM  
TEMPERABLE  
SOLAR CONTROL  
LOW-E GLASS  
NEUTRAL 41/27  
(Skylight)

ARCHITECTURAL DESIGN  
NKY Architects and Engineers

INVESTOR  
Ministry of Health

FAÇADE CONSULTANT  
Priedemann Façade Experts

GLASS PROCESSOR  
Ant Cam, Ardıç Cam

# NEF ATAKÖY 22 İSTANBUL

ŞİSECAM  
TEMPERABLE  
SOLAR CONTROL  
LOW-E GLASS  
NEUTRAL 62/44

ŞİSECAM  
TEMPERABLE  
SOLAR CONTROL  
LOW-E GLASS  
NEUTRAL 71/53

ARCHITECTURAL DESIGN  
HOK Washington DC & Dome

INVESTOR  
Nef Timur Holding

GLASS PROCESSOR  
Çiraylar Cam, Yıldız Cam

# İZMİR BAYRAKLI INTEGRATED HEALTHCARE CAMPUS İZMİR

ŞİSECAM  
TEMPERABLE  
SOLAR CONTROL  
LOW-E GLASS  
NEUTRAL 50/33  
(Façade)

ŞİSECAM  
TEMPERABLE  
SOLAR CONTROL  
LOW-E GLASS  
NEUTRAL 41/27  
(Skylight)

ARCHITECTURAL DESIGN  
Hayalgücü Design Co. Ltd.

INVESTOR  
Turkish Ministry of Health  
& Türkerler-Gama Ortaklığı

FAÇADE CONSULTANT  
MRS Architecture & Consulting

GLASS PROCESSOR  
Camyapi

# PROF. DR. CEMİL TAŞCIOĞLU CITY HOSPITAL İSTANBUL

ŞİSECAM  
TEMPERABLE  
SOLAR CONTROL  
LOW-E GLASS  
GREEN 59/36

ARCHITECTURAL DESIGN  
HPP International Turkey Mimarlık ve  
Danışmanlık Hizmetleri

INVESTOR  
Istanbul Project Coordination Unit (IPKB)

FAÇADE CONSULTANT  
MRS Architecture & Consulting

GLASS PROCESSOR  
Yakut Cam

# TOYA MODA İSTANBUL

ŞİSECAM  
TEMPERABLE  
SOLAR CONTROL  
LOW-E GLASS  
NEUTRAL 50/33

ARCHITECTURAL DESIGN  
DB Architects

INVESTOR  
Toya Yapı

GLASS PROCESSOR  
Trakya Group Glass



# FOLKART TIME IZMIR

ARCHITECTURAL DESIGN  
**SCRA - FREA**  
INVESTOR  
**Folkart**  
FAÇADE CONSULTANT  
**Bağlan Mimarlık**  
GLASS PROCESSOR  
**Aras Cam**

ŞİŞECAM  
TEMPERABLE  
SOLAR CONTROL  
LOW-E GLASS  
NEUTRAL 58/32

# MARRIOTT HOTEL IZMIR IZMIR

ARCHITECTURAL DESIGN  
**Metex Design**  
INVESTOR  
**Emsiar Turizm**  
FAÇADE CONSULTANT  
**Bağlan Mimarlık**  
GLASS PROCESSOR  
**Ardıç Cam**

ŞİŞECAM  
TEMPERABLE  
SOLAR CONTROL  
LOW-E GLASS  
NEUTRAL 50/27

# DURU BEYTEPE ANKARA

ARCHITECTURAL DESIGN  
**Evren Yiğit Mimarlık**  
INVESTOR  
**Tona-Safe Ortaklığı**  
FAÇADE CONSULTANT  
**Baymim Cephe Danışmanlık**  
GLASS PROCESSOR  
**Ardıç Cam**

ŞİŞECAM  
TEMPERABLE  
SOLAR CONTROL  
LOW-E GLASS  
NEUTRAL 62/44

# MERKEZ ANKARA SHOWROOM & SALES OFFICE ANKARA

ARCHITECTURAL DESIGN  
**Yazgan Design  
Architecture Inc.**  
INVESTOR  
**Pasifik & Çiftay**  
FAÇADE CONSULTANT  
**Baymim Cephe Danışmanlık**  
GLASS PROCESSOR  
**Ardıç Cam**

ŞİŞECAM  
TEMPERABLE  
SOLAR CONTROL  
LOW-E GLASS  
NEUTRAL 50/33

ŞİŞECAM  
TINTED FLOAT GLASS  
GREY

ŞİŞECAM  
LAMINATED  
LOW-E GLASS

# GROZNY STATE OIL TECHNICAL UNIVERSITY RUSSIA

INVESTOR  
**The Grozny State Petroleum  
Institute (GGNI)**

ŞİŞECAM  
TENTESOL  
BLUE

# MERKEZ ANKARA ANKARA

ARCHITECTURAL DESIGN  
**KPF (Kohn Pedersen Fox) - Yazgan Design Architecture &  
AGE Architecture & A Architectural Design**

INVESTOR  
**Emlak Konut GYO - Pasifik & Çiftay**  
FAÇADE CONSULTANT  
**Baymim Cephe Danışmanlık**  
GLASS PROCESSOR  
**Ardıç Cam, Dost Cam**

ŞİŞECAM  
TEMPERABLE  
SOLAR CONTROL  
LOW-E GLASS  
NEUTRAL 50/33



# ATABILGE INCEK RESIDENCES ANKARA

ARCHITECTURAL DESIGN  
**AS Mimarlık**  
INVESTOR  
**Fidan İnşaat**  
GLASS PROCESSOR  
**Ardıç Cam**

ŞİŞECAM  
TEMPERABLE  
SOLAR CONTROL  
LOW-E GLASS  
NEUTRAL 70/37

# ROMELL AETHER MUMBAI - INDIA

INVESTOR  
**Romell Group**

ŞİŞECAM  
TENTESOL TITANIUM  
GREEN

# NIGER TOWER REPUBLIC of GUINEA

ARCHITECTURAL DESIGN  
**Melia Construction**  
INVESTOR  
**Sonoco S.A.**  
GLASS PROCESSOR  
**Temka Glass**

ŞİŞECAM  
TEMPERABLE  
SOLAR CONTROL  
LOW-E GLASS  
GREEN 51/30

# VERDE BOYANA BULGARIA

ARCHITECTURAL DESIGN  
**AEDES Studio**  
INVESTOR  
**Galt**  
GLASS PROCESSOR  
**Capital Glass**

ŞİŞECAM  
SOLAR CONTROL  
LOW-E GLASS  
NEUTRAL SELECTIVE

ŞİŞECAM  
TEMPERABLE  
LACQUERED GLASS  
BLACK



# TOWER 27 CALIFORNIA - USA

INVESTOR  
**Alterra Worldwide**  
GLASS PROCESSOR  
**Trakya Group Glass**

ŞİŞECAM  
TEMPERABLE  
SOLAR CONTROL  
LOW-E GLASS  
NEUTRAL 50/33



# SEA ONE ROMANIA

INVESTOR  
**Euro Vial Residence**  
GLASS PROCESSOR  
**Brad Glass**

ŞİŞECAM  
TEMPERABLE  
SOLAR CONTROL  
LOW-E GLASS  
NEUTRAL 62/44



# ISHO ROMANIA

ARCHITECTURAL DESIGN  
**Andrescu & Gaivoronschi Associated Architects**

INVESTOR  
**Mulberry Development**

GLASS PROCESSOR  
**Lipoplast**

ŞİŞECAM  
TEMPERABLE  
SOLAR CONTROL  
LOW-E GLASS  
NEUTRAL 62/44



# KALPATARU AVANA PAREL MUMBAI - INDIA

ARCHITECTURAL DESIGN  
**Hafeez Contractor**  
INVESTOR  
**Kalpataru Limited**

ŞİŞECAM  
LAMINATED GLASS  
BLUE





**For more reference projects, you can download  
"Glass Projects" mobile app from the links below:**



**For IOS**



**For Android**



**ŞİŞECAM  
FLAT GLASS**